

TRANSCONTINENTAL GAS PIPE LINE COMPANY, LLC  
WATER QUALITY LAND COVER

**SOUTHEAST SUPPLY ENHANCEMENT PROJECT**  
**EDEN LOOP**

PITTSYLVANIA COUNTY, VIRGINIA

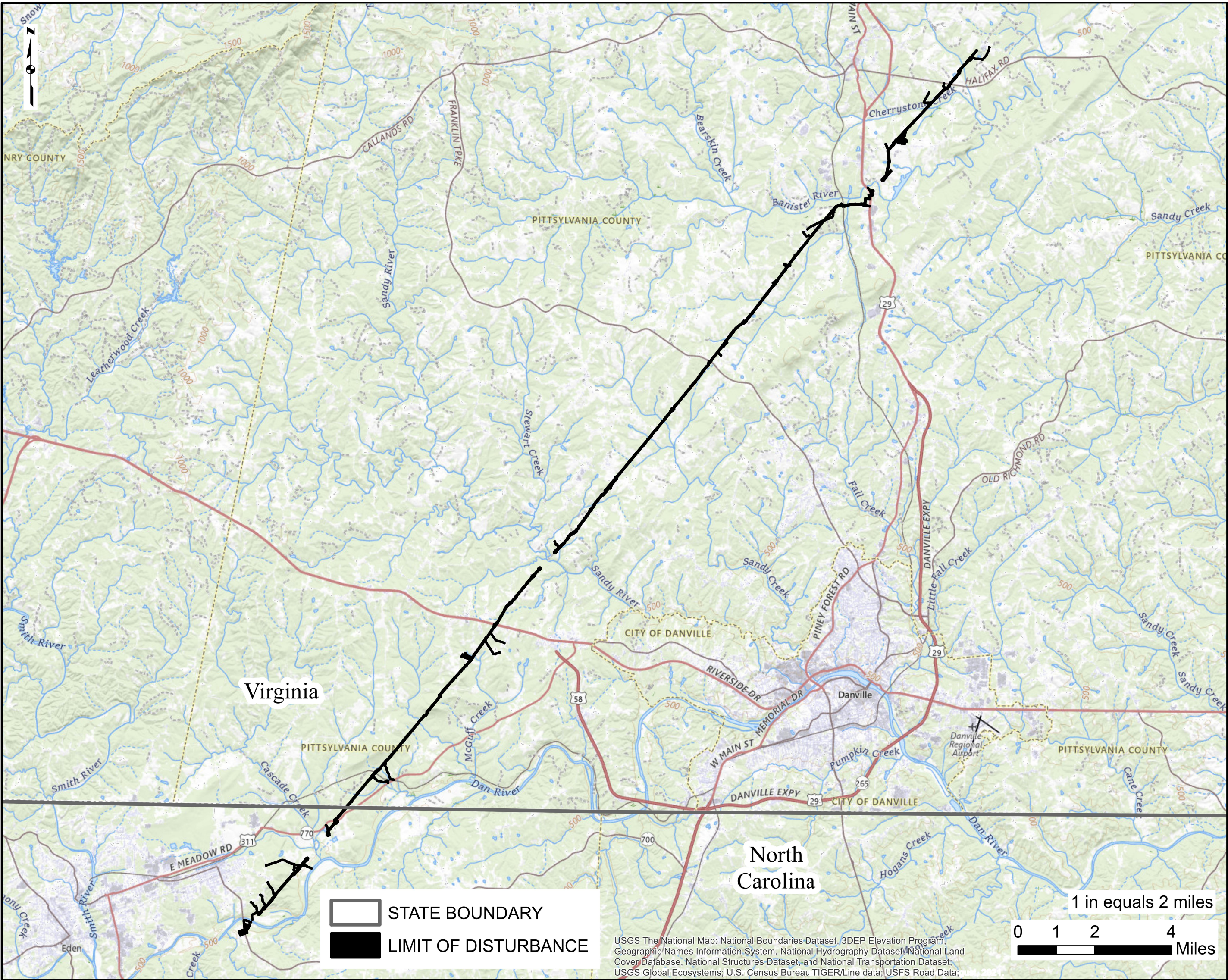
JUNE 2025

PROJECT OWNER/APPLICANT

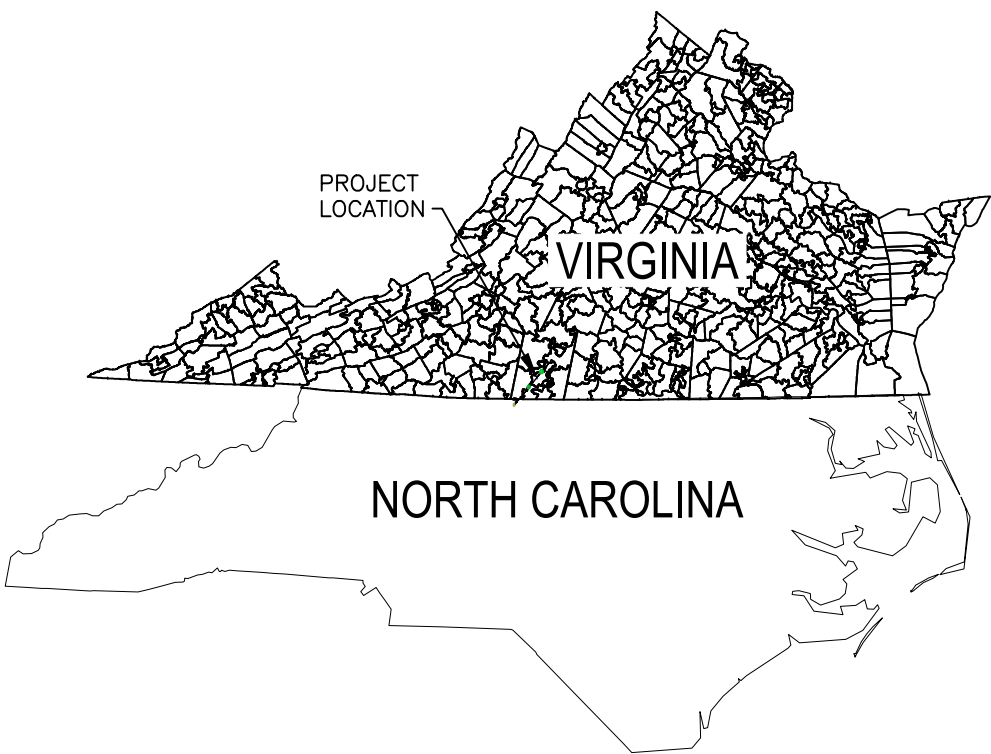
TRANSCONTINENTAL GAS PIPE LINE COMPANY, LLC  
2800 POST OAK BLVD, LEVEL 11  
HOUSTON, TX 77056  
CONTACT: JOSEPH DEAN, MANAGER PERMITTING

PLAN PREPARER / ENGINEER

GAI CONSULTANTS, INC.  
4701 COX ROAD, SUITE 125  
GLEN ALLEN, VA 23060  
PH: (804) 279-9357  
CONTACT: R. CRAIG MURPHY, P.E.



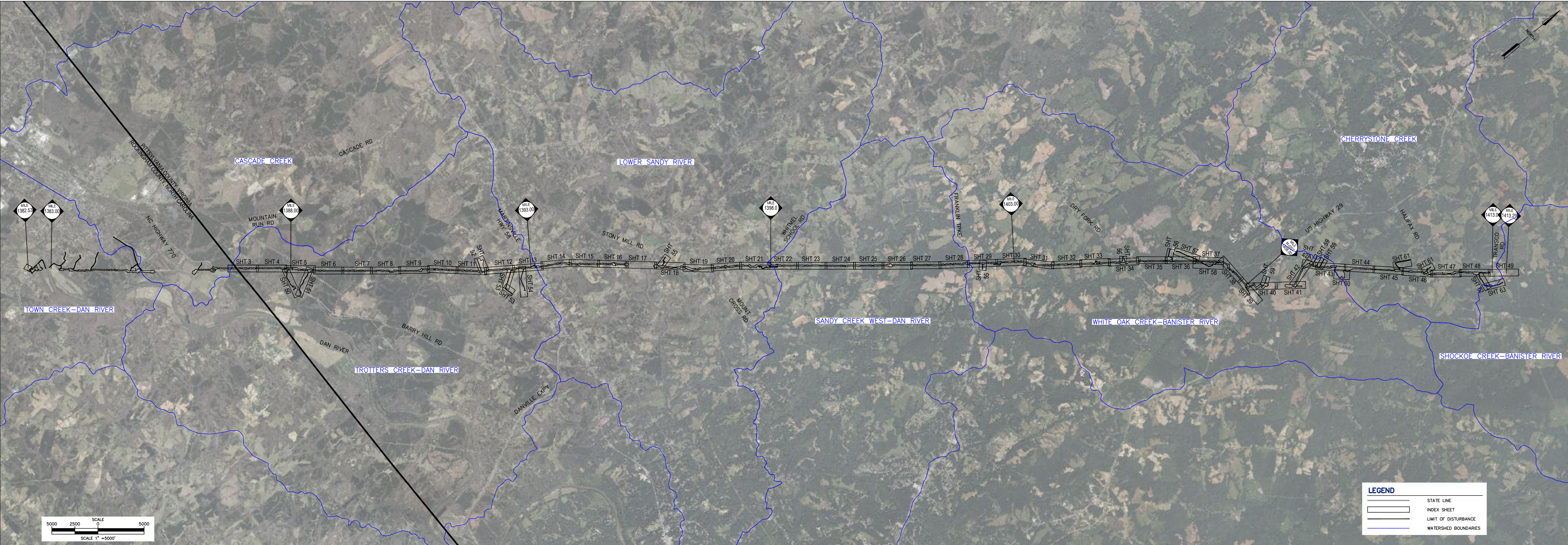
LOCATION MAP



VICINITY MAP  
N.T.S.

SHEET INDEX	
SHEET NUMBER	DRAWING TITLE
1 OF 66	WATER QUALITY LAND COVER - COVER SHEET
2 OF 66	WATER QUALITY LAND COVER - INDEX SHEET
3 - 63 OF 66	WATER QUALITY LAND COVER - SITE PLANS
64 - 66	WATER QUALITY LAND COVER - DETAILS

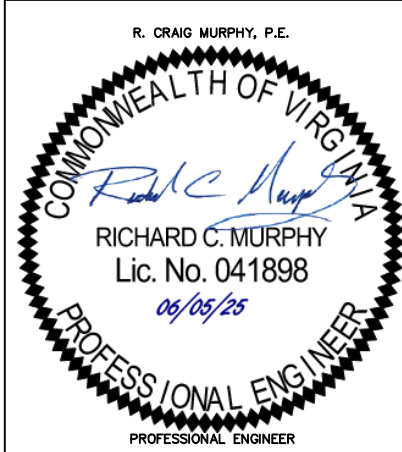
<div><div><div>R. CRAIG MURPHY, P.E.</div><div></div><div>RICHARD C. MURPHY</div><div>Lic. No. 041898</div><div>06/05/25</div><div>PROFESSIONAL ENGINEER</div><div>PROFESSIONAL ENGINEER</div></div></div>	REVISIONS						TRANSCONTINENTAL GAS PIPE LINE COMPANY, LLC SOUTHEAST SUPPLY ENHANCEMENT PROJECT EDEN LOOP WATER QUALITY LAND COVER				
	NO.	DATE	BY	DESCRIPTION	W.O. NO.	CHK.	APP.	COVER SHEET			
								PITTSYLVANIA COUNTY, VIRGINIA			
	DRAWN BY: CMK		DATE: 5-30-25		ISSUED FOR BID:		SCALE: AS NOTED				
	CHECKED BY: JML		DATE: 5-30-25		ISSUED FOR CONSTRUCTION:		REVISION:				
APPROVED BY: RCM		DATE: 5-30-25		DRAWING NUMBER: VA-EDEN-SMQUAL-001		SHEET 1 OF 66					
WO: C1009554		RID: 500									



HUC12 - ID	Watershed Name	Milepost Start	Milepost End
030101030903	Trotters Creek-Dan River	1386.89	1393.10
030101031003	Lower Sandy River	1393.10	1398.04
030101031004	Sandy Creek (West)-Dan River	1398.04	1402.04
030101050103	White Oak Creek-Banister River	1402.04	1409.70
030101050104	Cherrystone Creek	1409.70	1413.18
030101050203	Shockoe Creek-Banister River	1413.18	1413.29


- REFERENCES:
- EXISTING CONTOURS PROVIDED BY TRANSCO FEBRUARY 19, 2024.
  - AERIAL IMAGERY PROVIDED BY TRANSCO FEBRUARY 13, 2024.
  - HORIZONTAL DATUM BASED ON VIRGINIA STATE PLANE, SOUTH FEET, NAD83.
  - VERTICAL DATUM BASED ON NORTH AMERICAN DATUM OF 1988, NAVD88.
  - ENVIRONMENTAL DELINEATIONS PERFORMED BY WETLAND STUDIES AND SOLUTIONS, INC. 2024-2025.
  - WHERE TREE LINES WERE NOT PICKED UP BY SURVEY, TREE LINE BOUNDARIES WERE SKETCHED IN USING AERIAL IMAGERY.

- NOTES:
- EXISTING LAND USE DERIVED FROM FLOWN AERIAL IMAGERY, SURVEYED TREE LINES, AND NLCD LAND COVER DATA, DATED 2023. IF AT THE TIME OF CONSTRUCTION EXISTING LAND COVER DIFFERS FROM WHAT IS SHOWN ON THE PLAN, CONTRACTOR SHALL CONFER WITH TRANSCO PERSONNEL ON SITE TO DETERMINE PROPER POST-CONSTRUCTION LAND COVER.
  - PRE-CONSTRUCTION AND POST-CONSTRUCTION LAND COVER IN STREAM AND WETLAND AREAS ARE SHOWN FOR WATER QUANTITY AND WATER QUALITY CALCULATION PURPOSES ONLY. CONTRACTOR SHALL REFER TO THE WETLAND RESTORATION PLANS TO ENSURE PROPER RESTORATION OF WETLANDS.



REVISIONS					
NO.	DATE	BY	DESCRIPTION	W.O. NO.	CHK. APP.

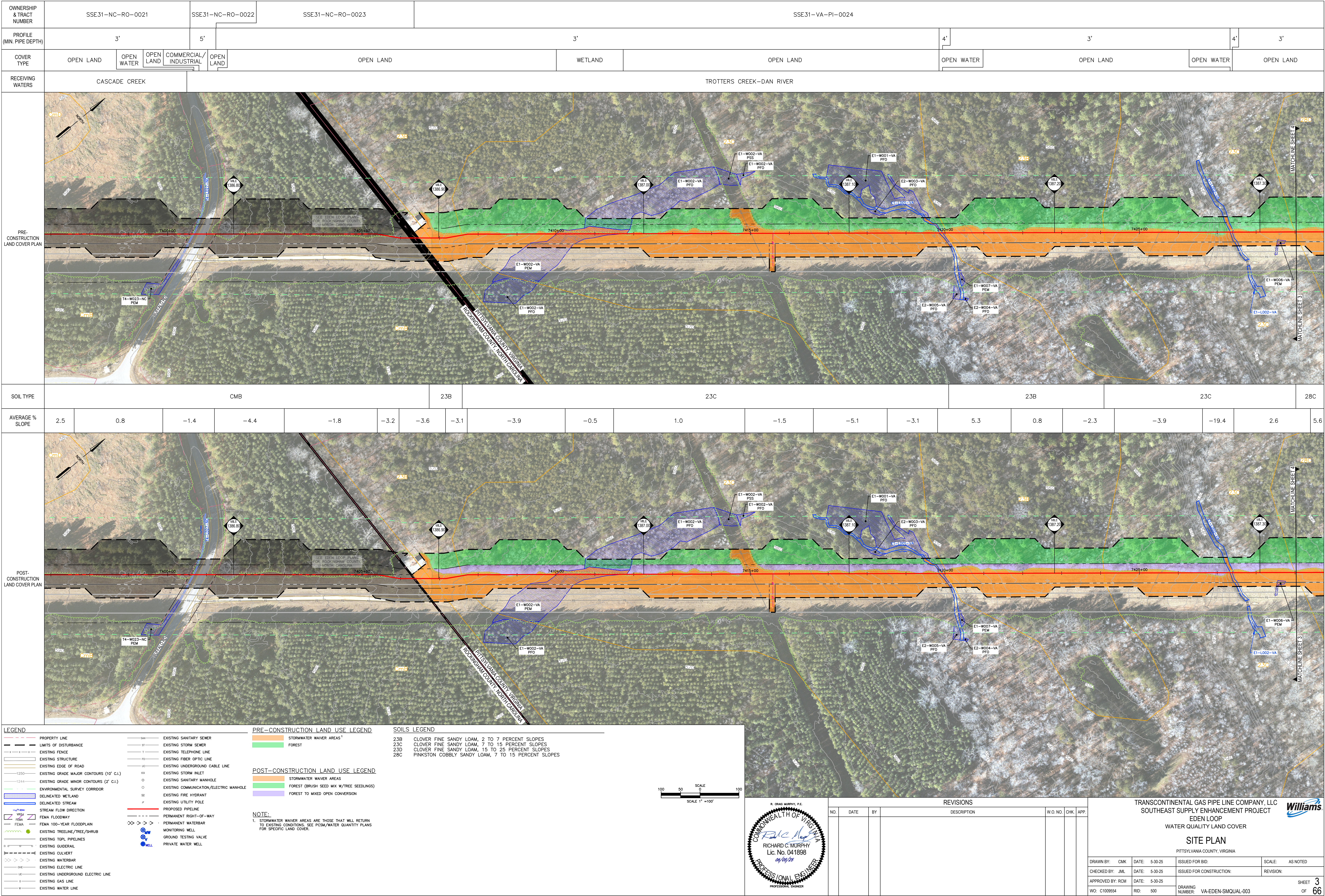
TRANSCONTINENTAL GAS PIPE LINE COMPANY, LLC  
SOUTHEAST SUPPLY ENHANCEMENT PROJECT  
EDEN LOOP  
WATER QUALITY LAND COVER

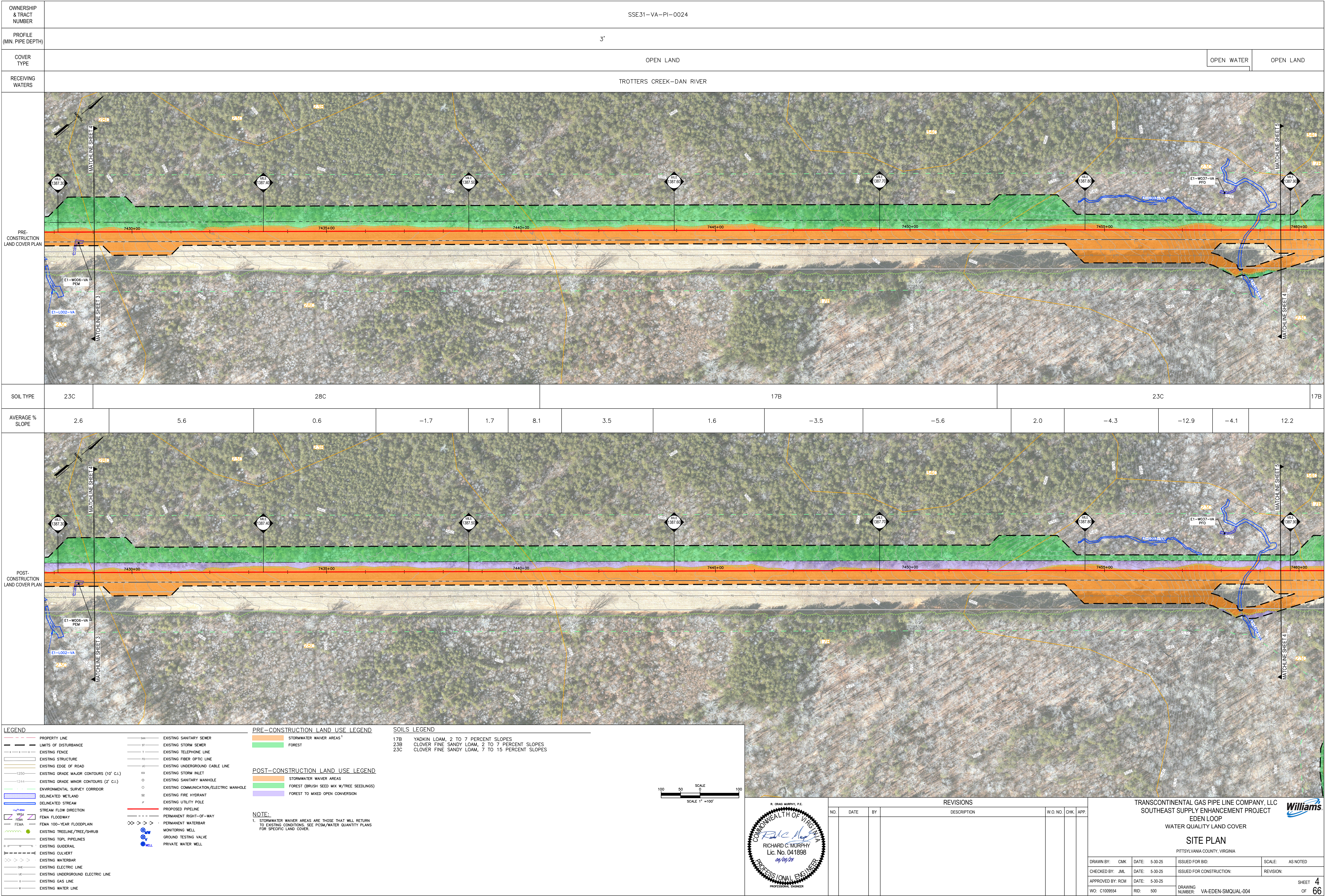


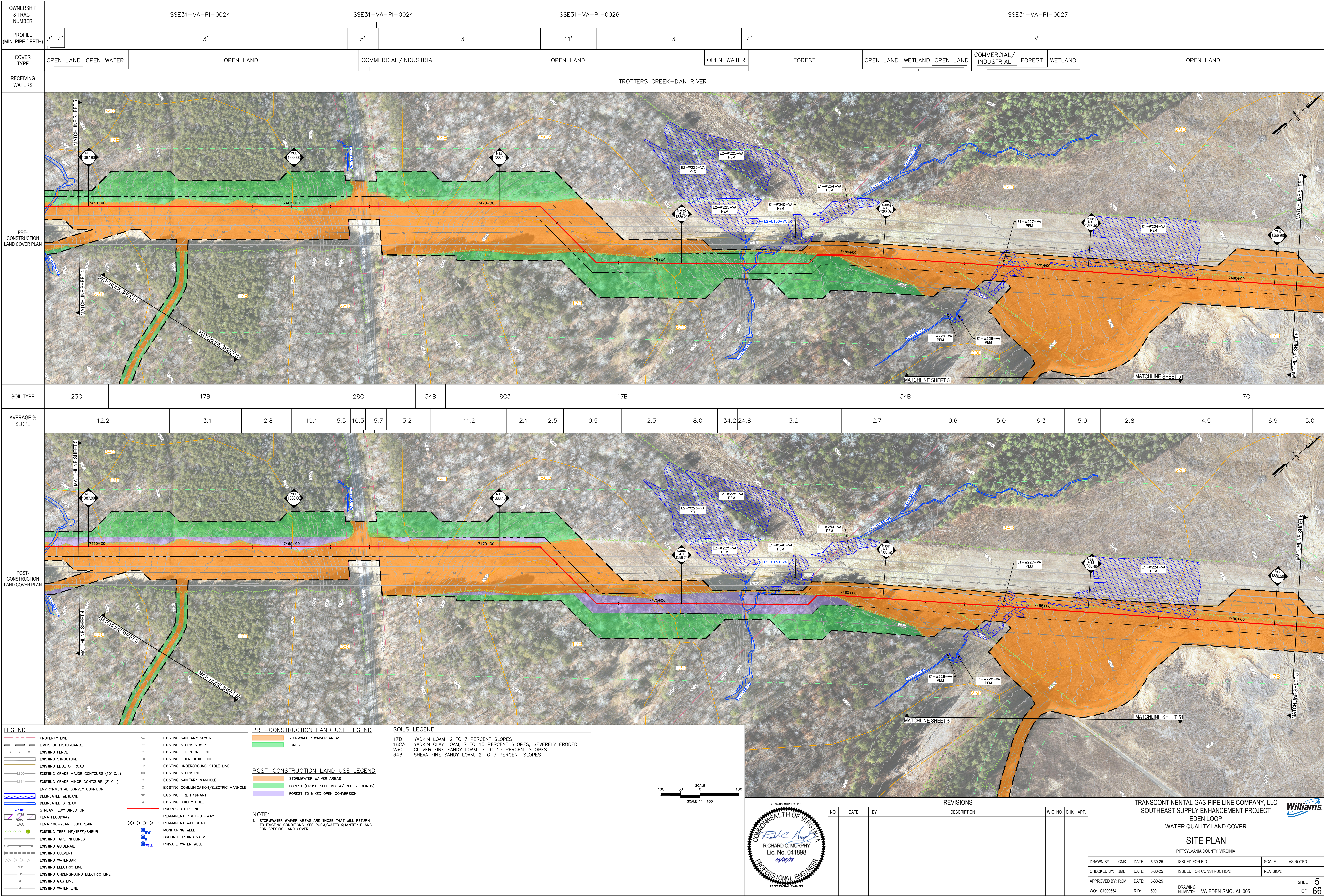
INDEX SHEET

PITTSYLVANIA COUNTY, VIRGINIA

DRAWN BY: CMK	DATE: 5-30-25	ISSUED FOR BID:	SCALE: AS NOTED
CHECKED BY: JML	DATE: 5-30-25	ISSUED FOR CONSTRUCTION:	REVISION:
APPROVED BY: RCM	DATE: 5-30-25	SHEET 2 OF 66	
W.O. C1009554	RID: 500		
		DRAWING NUMBER: VA-EDEN-SMQUAL-002	







LEGEND

PROPERTY LINE

LIMITS OF DISTURBANCE

EXISTING FENCE

EXISTING STRUCTURE

EXISTING EDGE OF ROAD

EXISTING GRADE MAJOR CONTOURS (10' C.I.)

EXISTING GRADE MINOR CONTOURS (2' C.I.)

ENVIRONMENTAL SURVEY CORRIDOR

DELINEATED WETLAND

DELINEATED STREAM

STREAM FLOW DIRECTION

FEMA FLOODWAY

FEMA 100-YEAR FLOODPLAIN

EXISTING TREELINE/TREE/SHRUB

EXISTING TGPL PIPELINES

EXISTING GUIDERAIL

EXISTING CULVERT

EXISTING WATERBAR

EXISTING ELECTRIC LINE

EXISTING UNDERGROUND ELECTRIC LINE

EXISTING GAS LINE

EXISTING WATER LINE

EXISTING SANITARY SEWER

EXISTING STORM SEWER

EXISTING TELEPHONE LINE

EXISTING FIBER OPTIC LINE

EXISTING UNDERGROUND CABLE LINE

EXISTING STORM INLET

EXISTING SANITARY MANHOLE

EXISTING COMMUNICATION/ELECTRIC MANHOLE

EXISTING FIRE HYDRANT

EXISTING UTILITY POLE

PROPOSED PIPELINE

PERMANENT RIGHT-OF-WAY

PERMANENT WATERBAR

MONITORING WELL

GROUND TESTING VALVE

PRIVATE WATER WELL

PRE-CONSTRUCTION LAND USE LEGEND

STORMWATER WAIVER AREAS<sup>1</sup>

FOREST

POST-CONSTRUCTION LAND USE LEGEND

STORMWATER WAIVER AREAS

FOREST (BRUSH SEED MIX W/TREE SEEDLINGS)

FOREST TO MIXED OPEN CONVERSION

SOILS LEGEND

17B YADKIN LOAM, 2 TO 7 PERCENT SLOPES

18C3 YADKIN CLAY LOAM, 7 TO 15 PERCENT SLOPES, SEVERELY ERODED

23C CLOVER FINE SANDY LOAM, 7 TO 15 PERCENT SLOPES

34B SHEVA FINE SANDY LOAM, 2 TO 7 PERCENT SLOPES

NOTE:

1. STORMWATER WAIVER AREAS ARE THOSE THAT WILL RETURN TO EXISTING CONDITIONS. SEE PCSM/WATER QUANTITY PLANS FOR SPECIFIC LAND COVER.

100 50 0 100

SCALE 1" = 100'

R. CRAIG MURPHY, P.E.

COMMONWEALTH OF VIRGINIA

RICHARD C. MURPHY

Lic. No. 041898

05/05/25

PROFESSIONAL ENGINEER

REVISIONS

NO.	DATE	BY	DESCRIPTION	W.O. NO.	CHK.	APP.

TRANSCONTINENTAL GAS PIPE LINE COMPANY, LLC

SOUTHEAST SUPPLY ENHANCEMENT PROJECT

EDEN LOOP

WATER QUALITY LAND COVER

SITE PLAN

PITTSYLVANIA COUNTY, VIRGINIA

DRAWN BY: CMK DATE: 5-30-25 ISSUED FOR BID: SCALE: AS NOTED

CHECKED BY: JML DATE: 5-30-25 ISSUED FOR CONSTRUCTION: REVISION:

APPROVED BY: RCM DATE: 5-30-25

W.O. C1009554 RID: 500 DRAWING NUMBER: VA-EDEN-SMQUAL-005 SHEET 5 OF 66

