



1) USTs to be removed.

2) USTs and piping.



3) Tanks and existing groundwater monitoring wells (2 of 5).

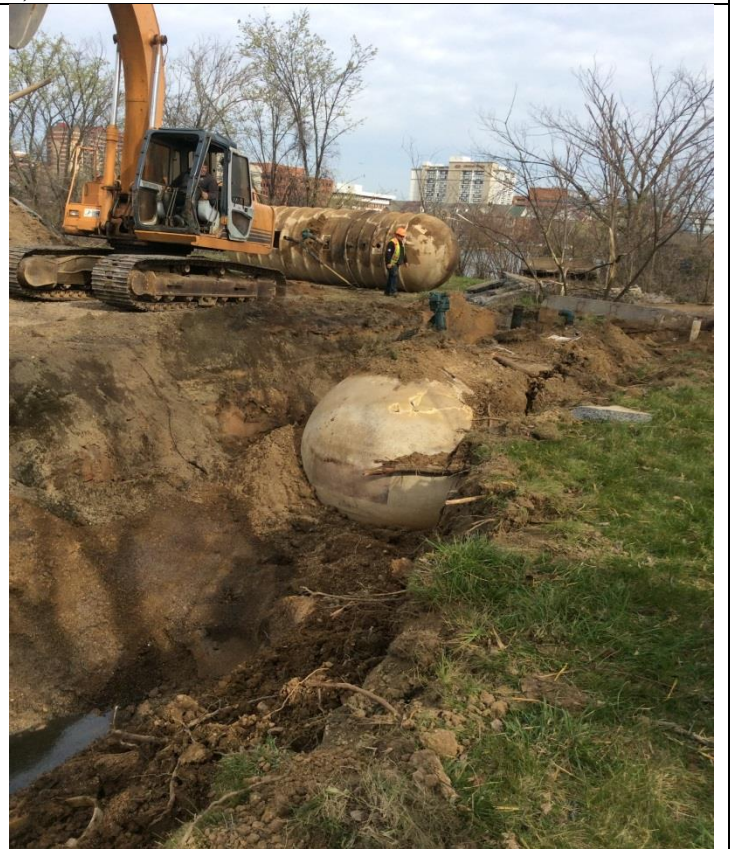
4) Dispensers removed.





5) Removal of first tank.

6)



7) Tank trench.

8)





9) Removal of 3<sup>rd</sup> tank.

10)



11)

12) Soil sampling.





13) Pump out of water in tank trench.

14)



15) Back fill.





1) Preparing for removal.



2)View of old dispenser;ocation and tank removal site.



3)



4) View of worksite from dock.



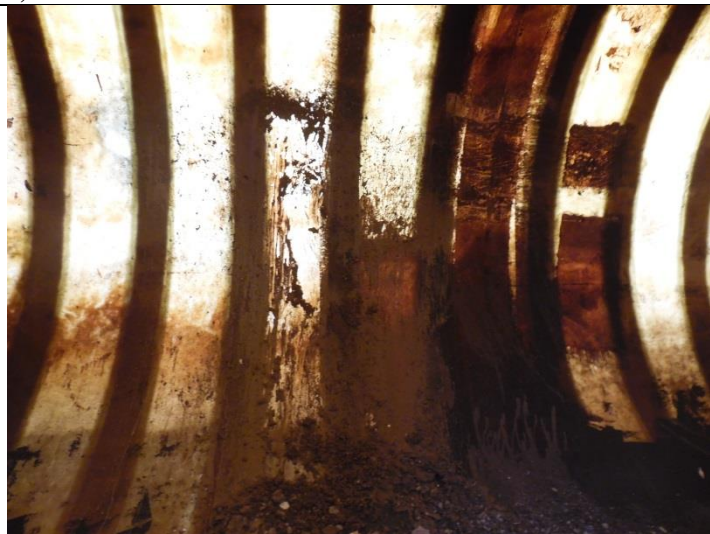
5) View of worksite from dock.





6) Removal of 2nd UST.

7) 2<sup>nd</sup> UST.



8)Interior 2<sup>nd</sup> UST.

9) Tank trench



10)Water pump out.