

# Virginia DEQ Permit Key



This document helps applicants understand how the Virginia Department of Environmental Quality (DEQ) decides which permits, registrations, or approvals are needed for their activities. It provides a step-by-step guide, showing users which decisions to make to figure out what approval actions they need to submit to DEQ. While this document covers most situations, some activities may require direct help from DEQ staff.

**DISCLAIMER:** This document is intended to be a reference for DEQ permit applicants. Applicants are encouraged to reach out to DEQ staff directly with any questions. Reliance on this document does not absolve any individual or entity from the responsibility to comply with State, Local, or Federal laws or regulations.

Acronyms & terms used in this document

View

Permitting Ombudsmen are available for permitting- and project-related questions.

Contact

Permit Key Webinar

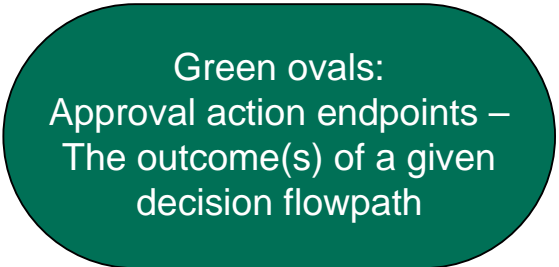
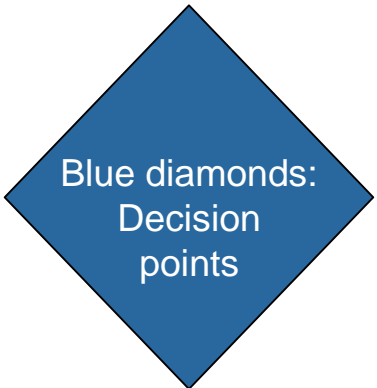
View

## DIRECTORY

### DOES THE PROJECT INCLUDE THE FOLLOWING ACTIVITIES?

Release any air pollution into the ambient air.....	Air
Aboveground storage tanks.....	Aboveground storage tanks
Generate, handle, or storage of animal waste.....	Animal Waste
Land application, storage, and distribution and marketing of biosolids.....	Biosolids
Withdrawing groundwater from a well.....	Groundwater Withdrawal
Treatment, storage, or disposal of hazardous solid waste.....	Hazardous Waste
Municipal Separate Storm Sewer System.....	MS4
Building renewable energy or energy storage.....	Renewable Energy
Reclamation and reuse.....	Reclamation and Reuse
Transferring, storage, and/or treatment of regulated medical waste.....	Regulated Medical Waste
Transferring, storage, and/or landfilling of waste.....	Solid Waste
Withdrawing of surface water.....	Surface Water Withdrawal
Underground storage tanks.....	Underground Storage Tanks
Land disturbing activity.....	Erosion and Stormwater Management
Generate, handle, or store industrial residuals or wastewater that does not discharge to surface waters.....	Virginia Pollution Abatement
Discharge water pollution.....	VPDES
Generation of sewage.....	VPDES-Sewage
Potential waterbodies or wetlands onsite.....	Virginia Water Protection

### LEGEND



# Air Permitting

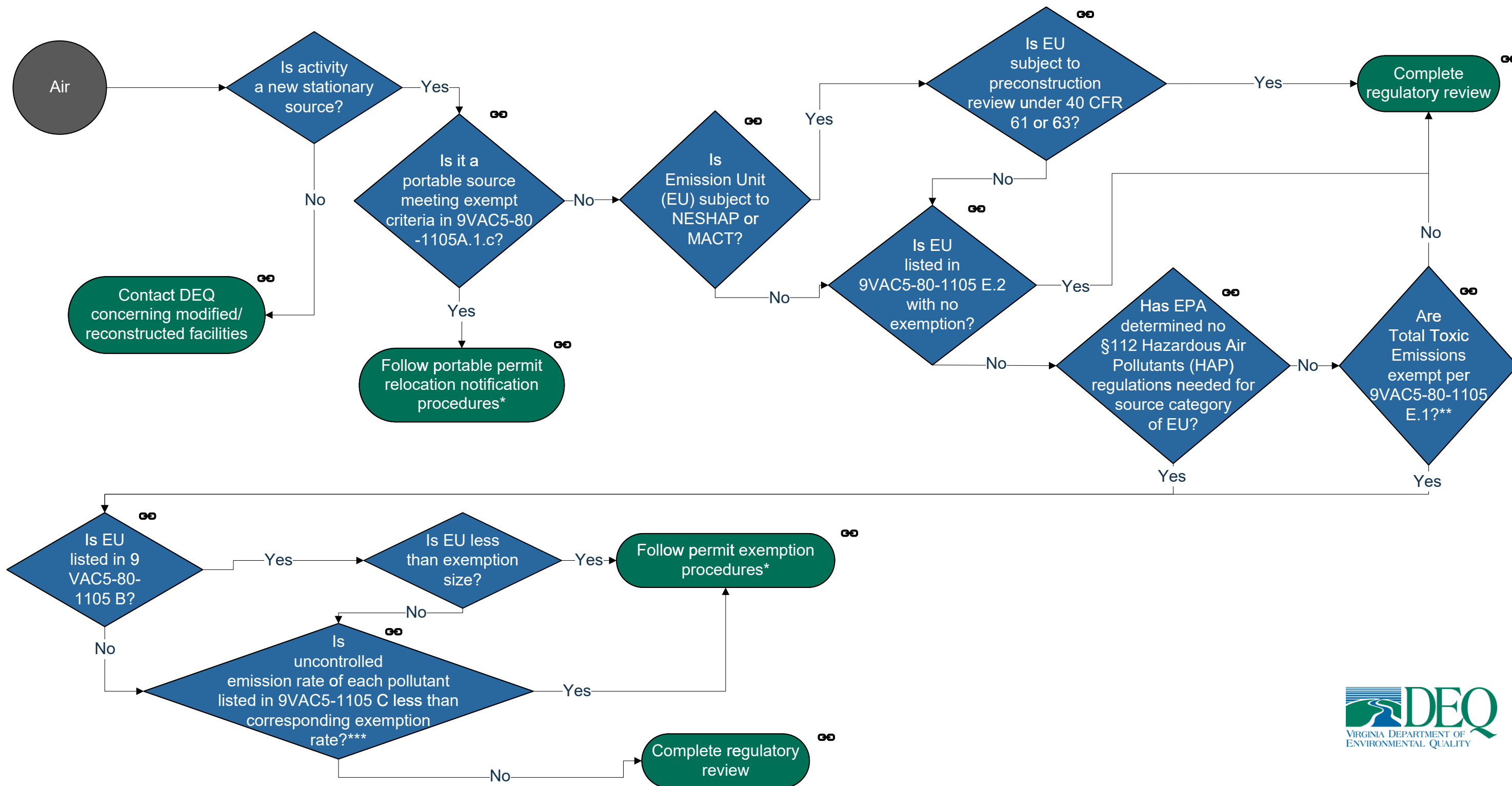
For stationary sources with more than one emission unit, continue the review process until the entire stationary source has been reviewed for permitting applicability.

\* Any owner claiming that a facility is exempt from this article under the provisions of this section shall keep records as may be necessary to demonstrate to the satisfaction of the department that the facility was exempt at the time a minor New Source Review (NSR) permit would have otherwise been required under this article (9VAC-80-1105.A.4).

\*\*Exclude emissions from units listed at 9VAC5-60-300C.7, D, or E or in a source category for which USEPA has completed a residual risk review.

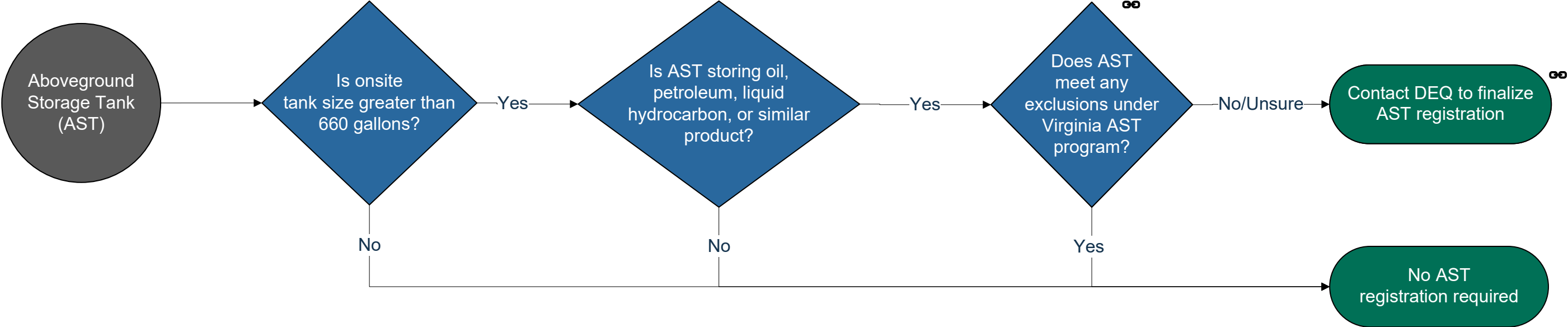
\*\*\*Emissions for each pollutant shall include the total emissions from the new or relocated facility excluding emissions from emission unit(s) exempted by 9 VAC 5-80-1105 B.

Permit Determination



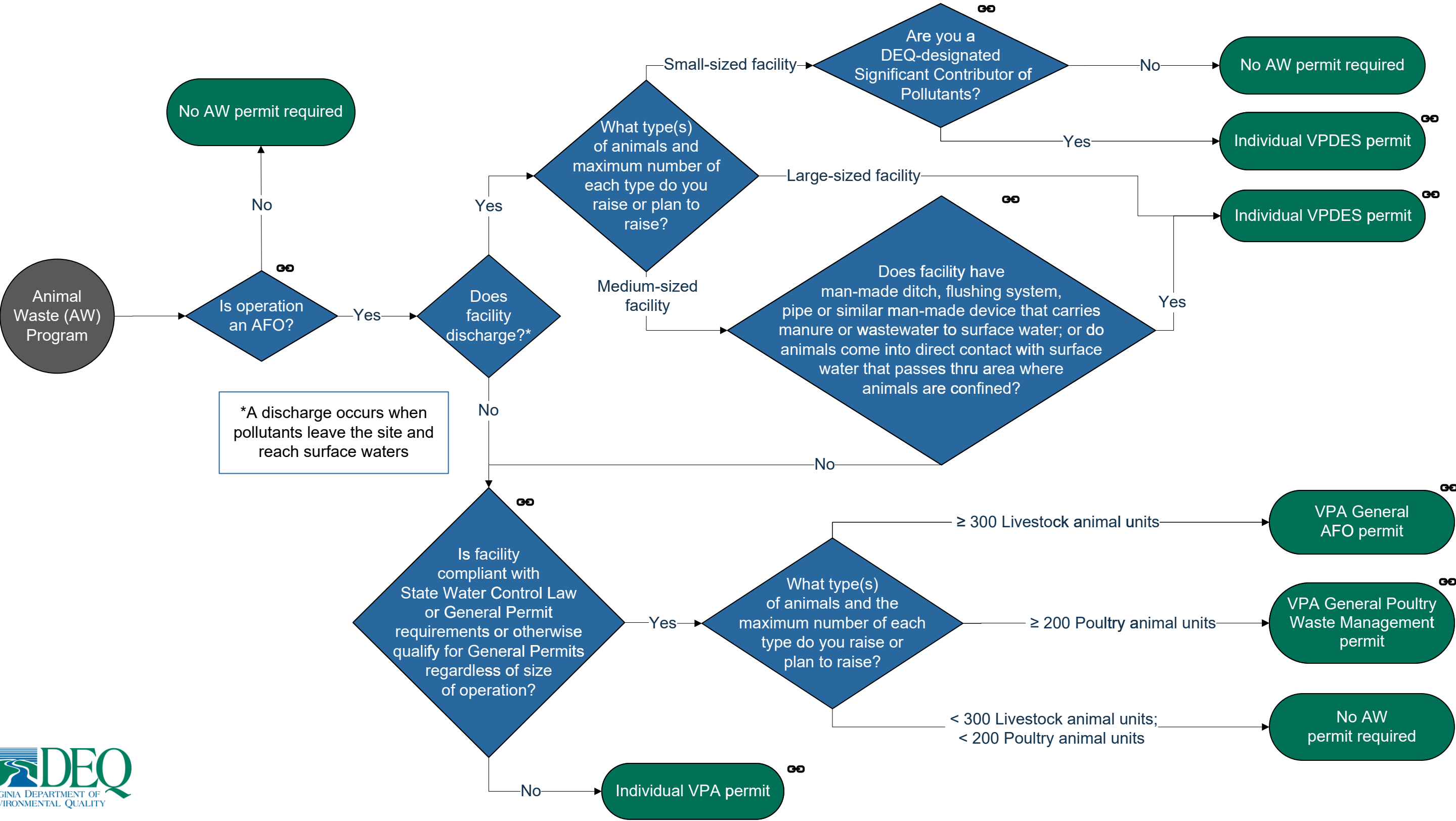
Aboveground Storage Tank

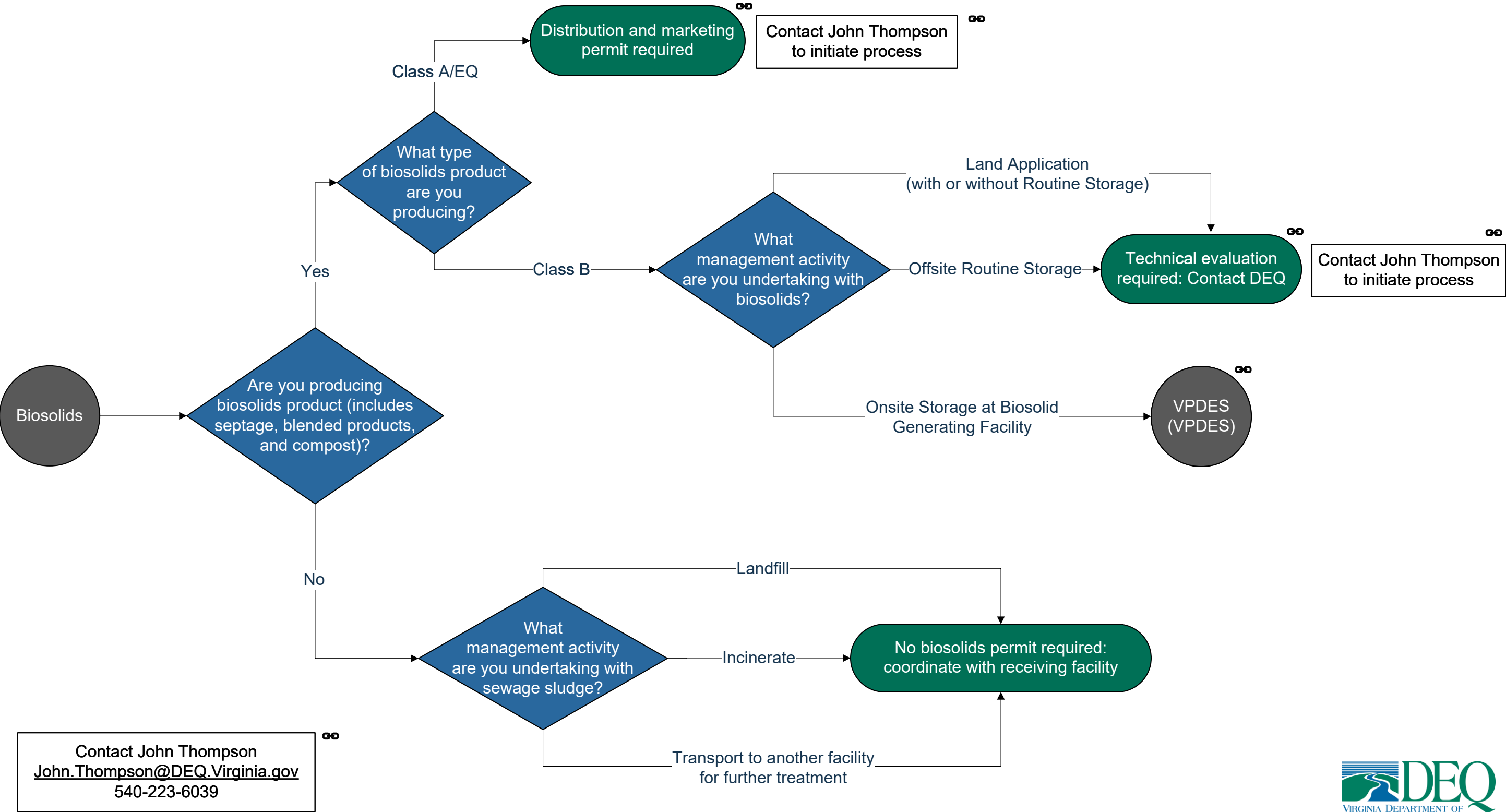
Registration Determination



Animal Waste Program

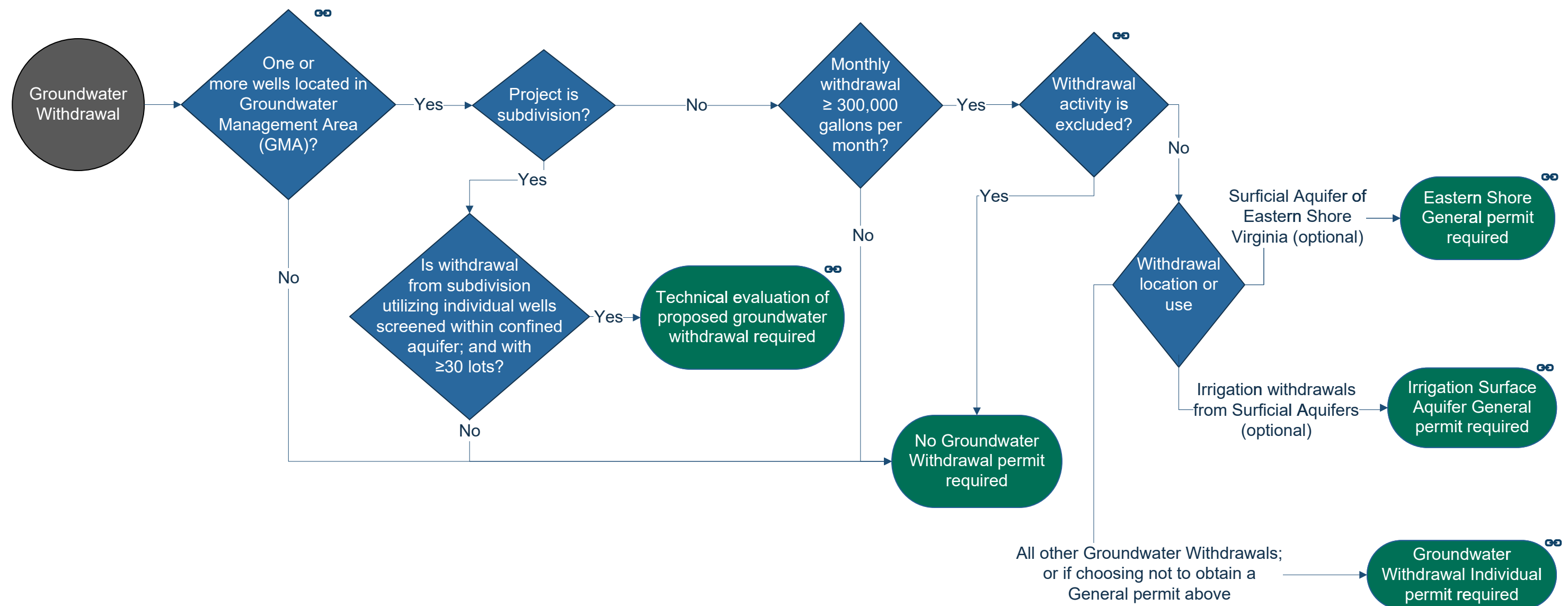
Permit Determination

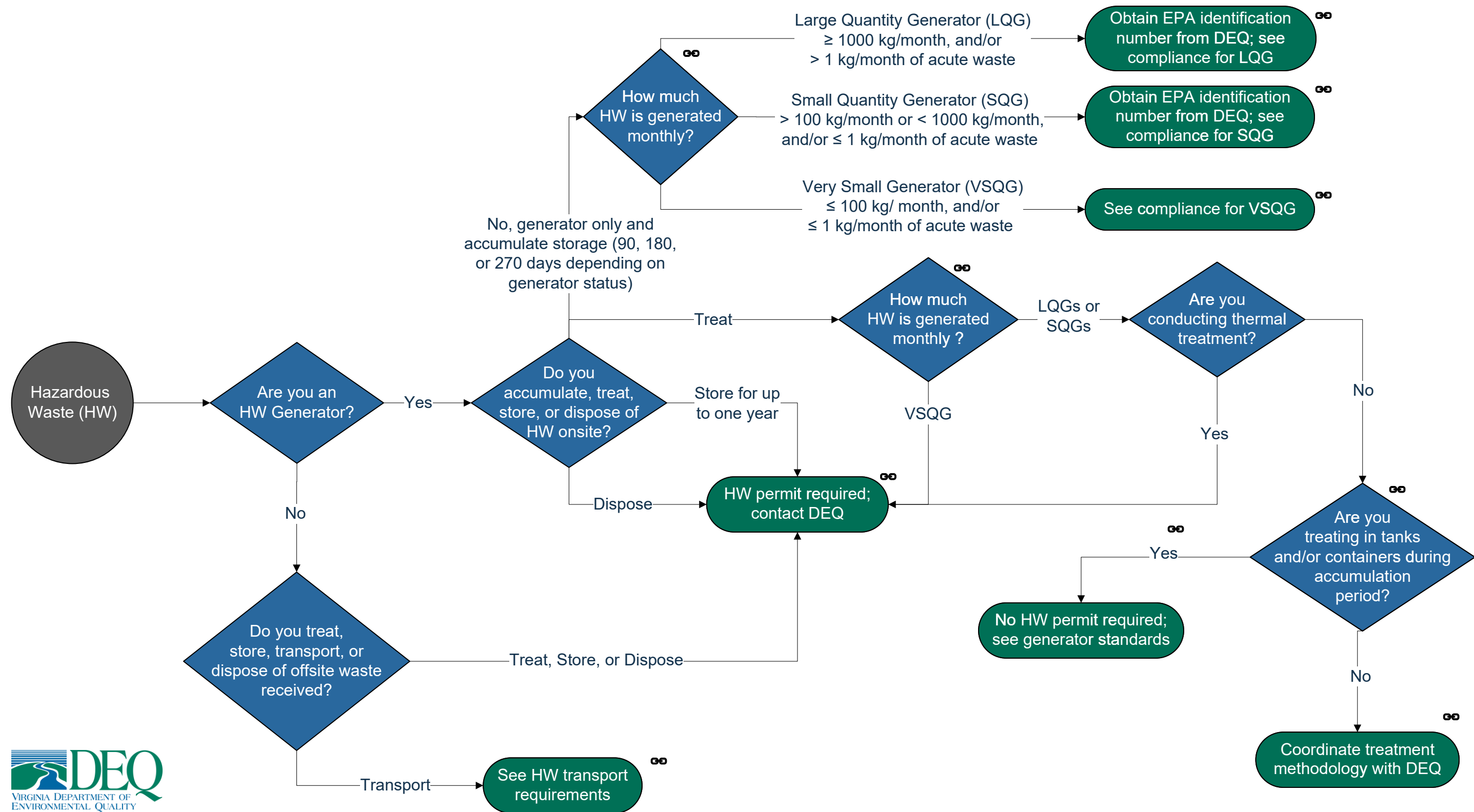




# Groundwater Withdrawal

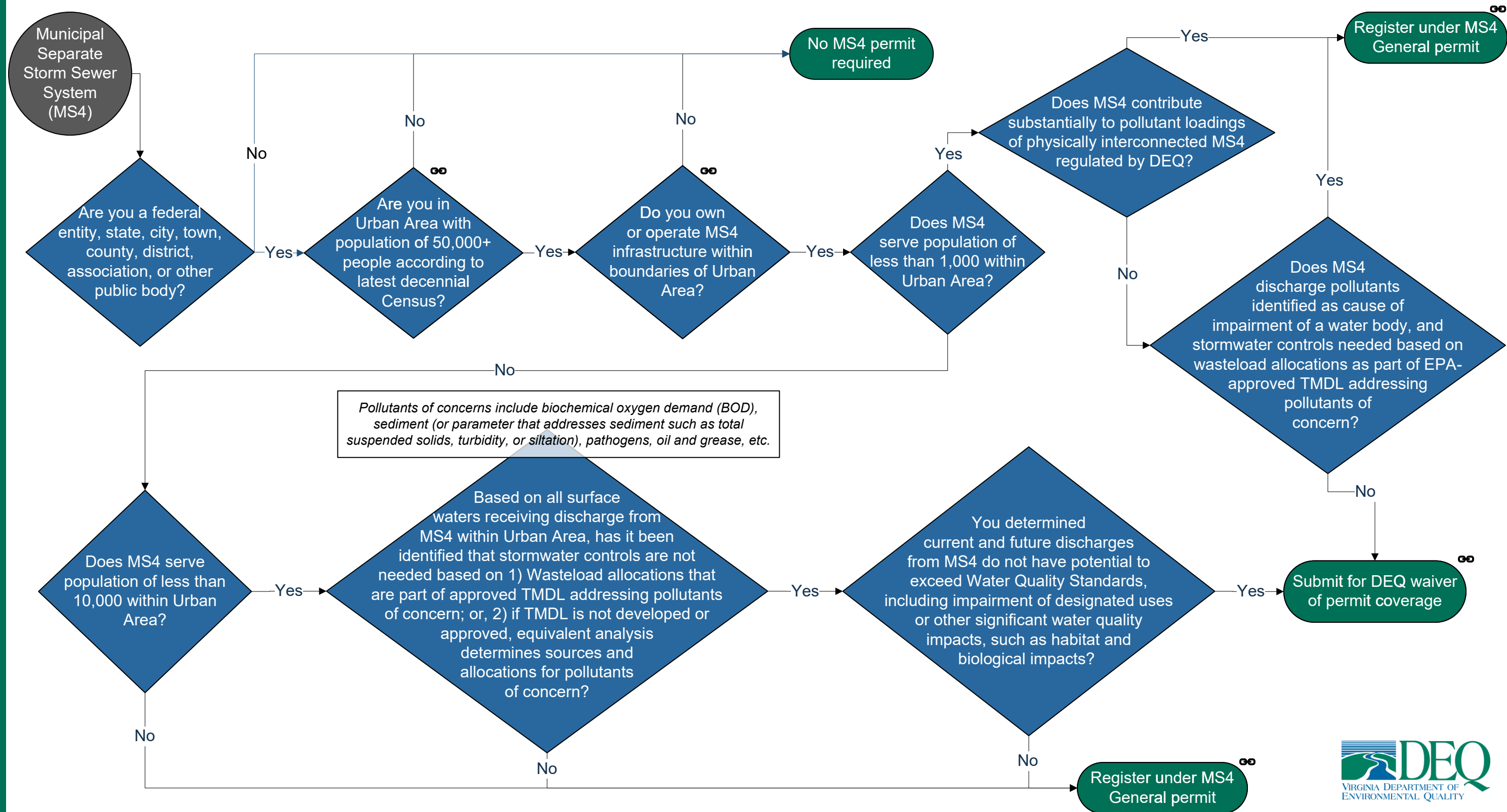
## Permit Determination

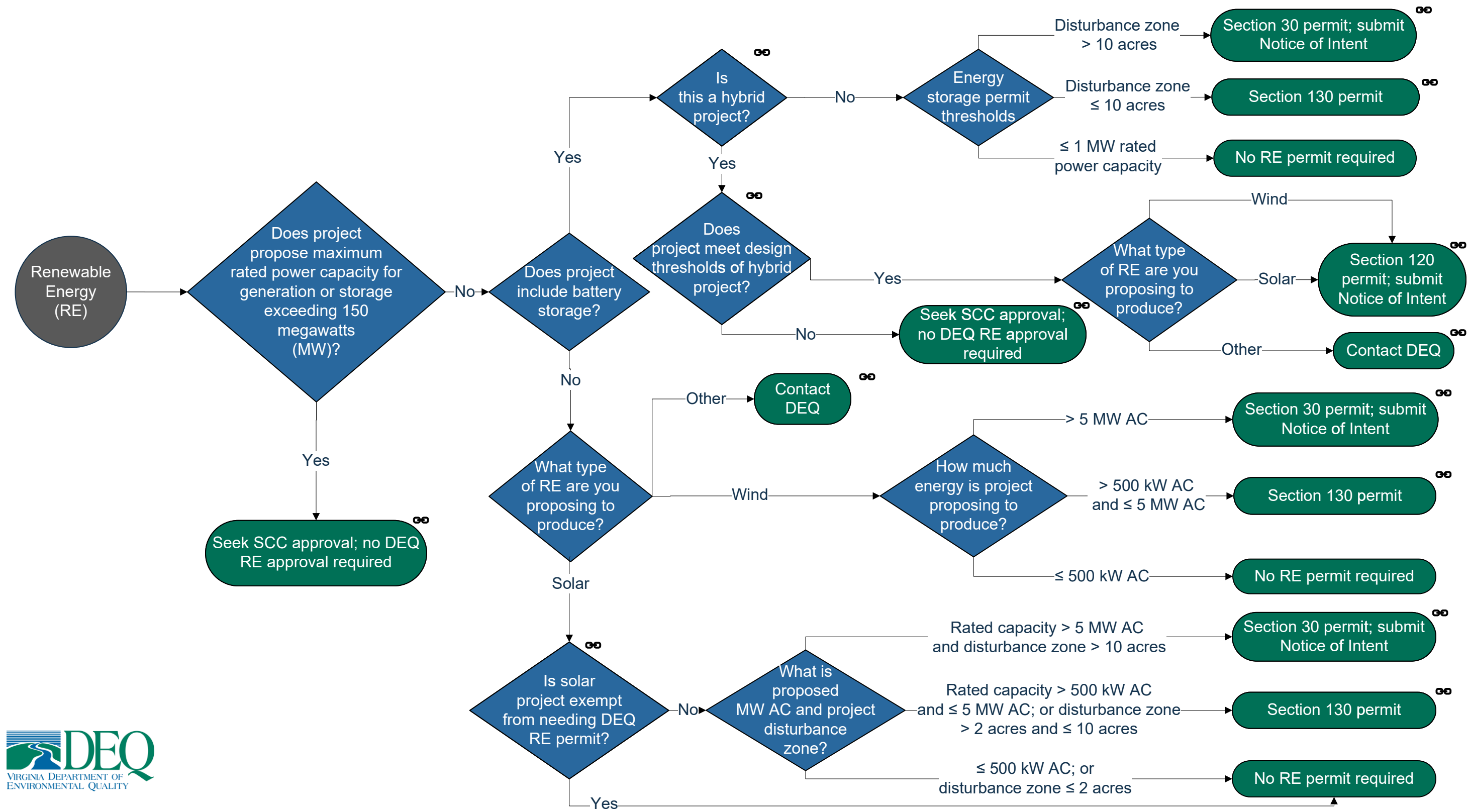


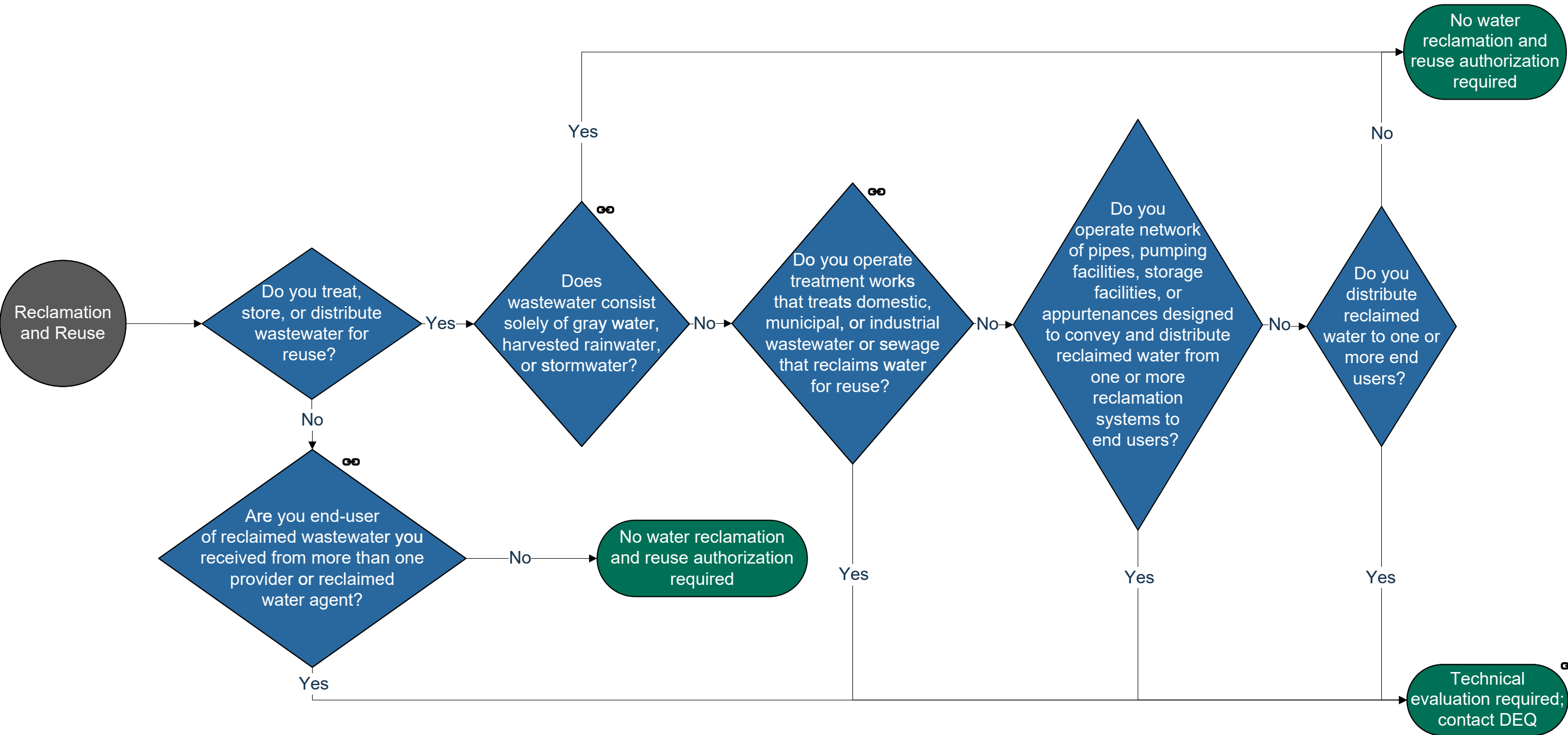


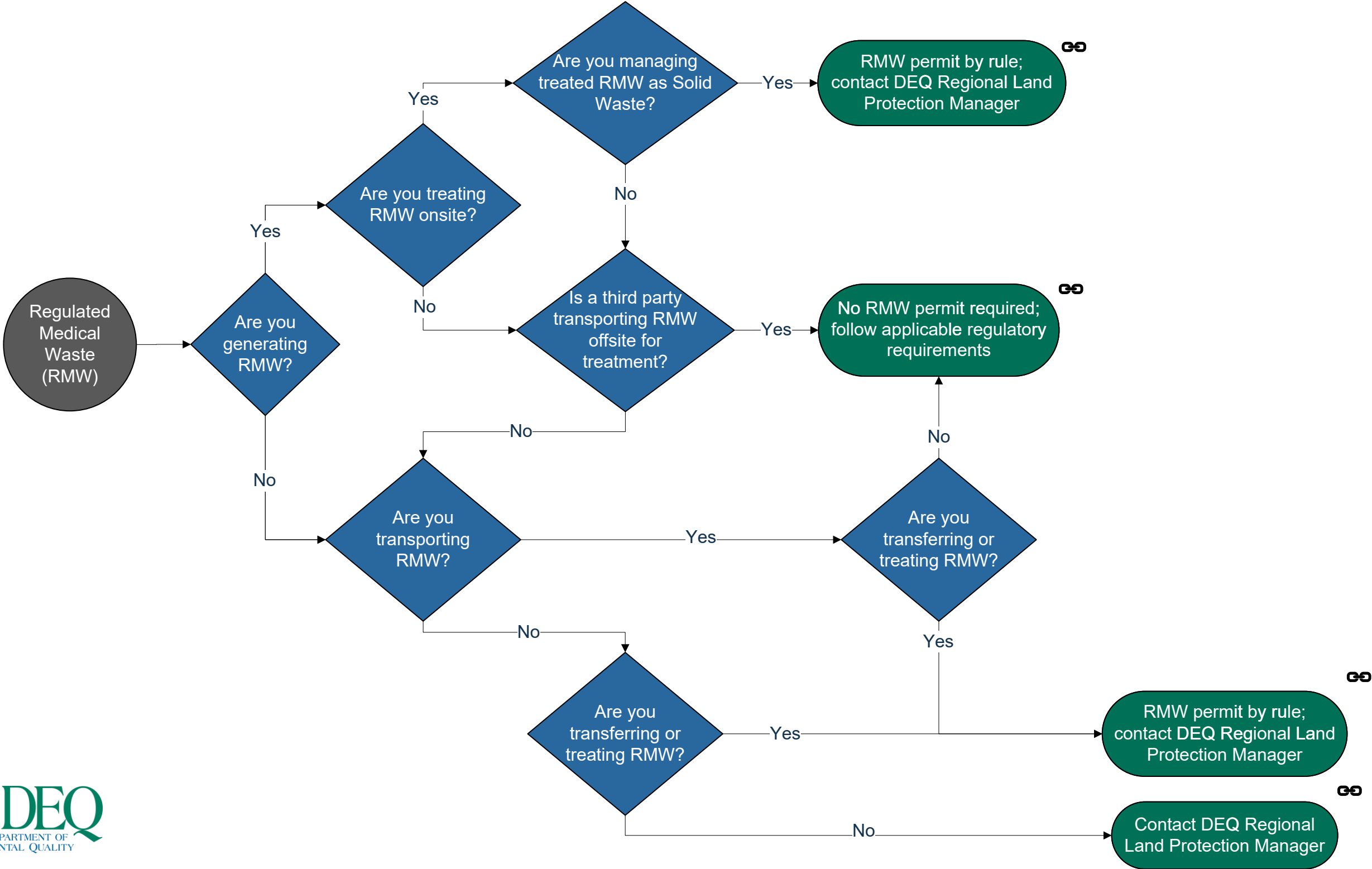
# Municipal Separate Storm Sewer System

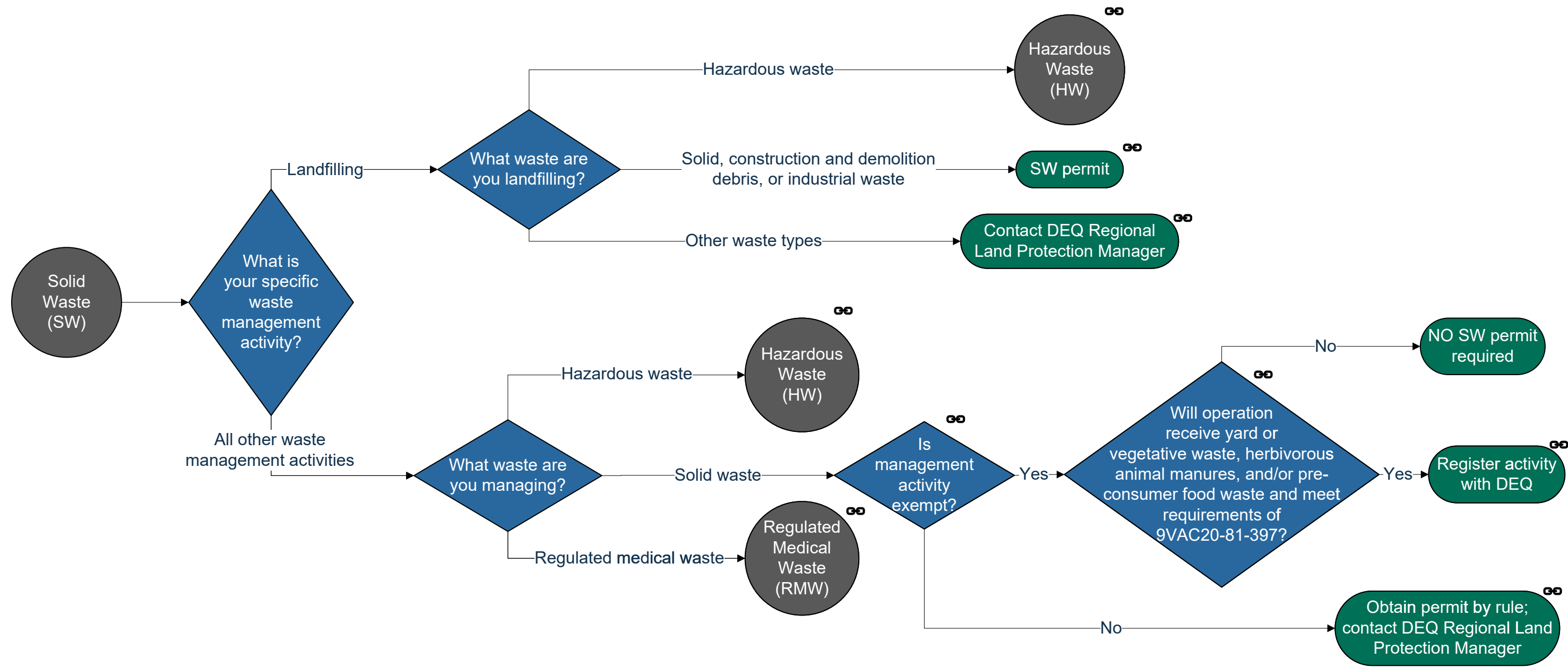
Permit Determination

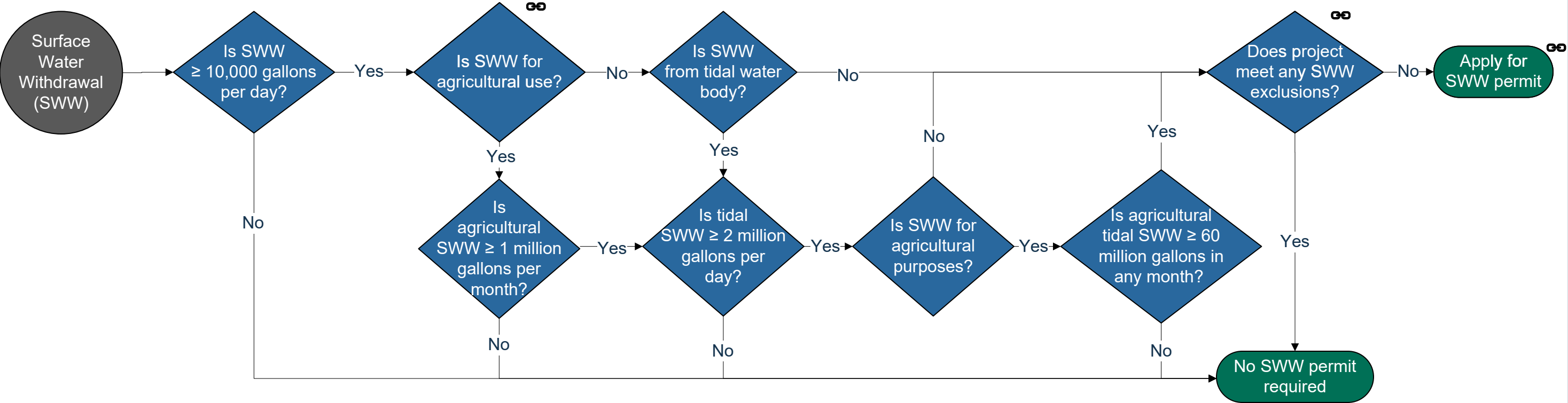






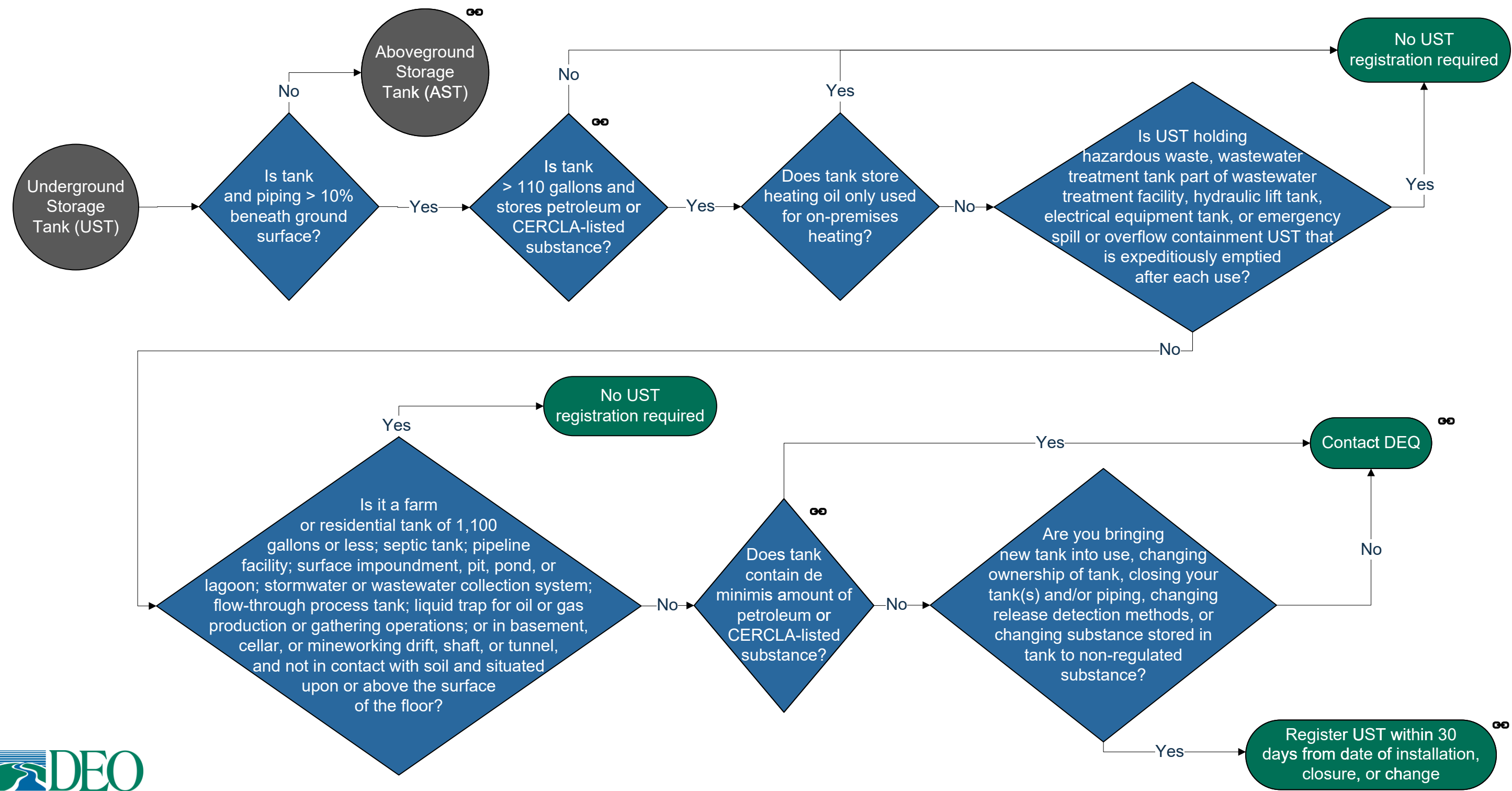






# Underground Storage Tank

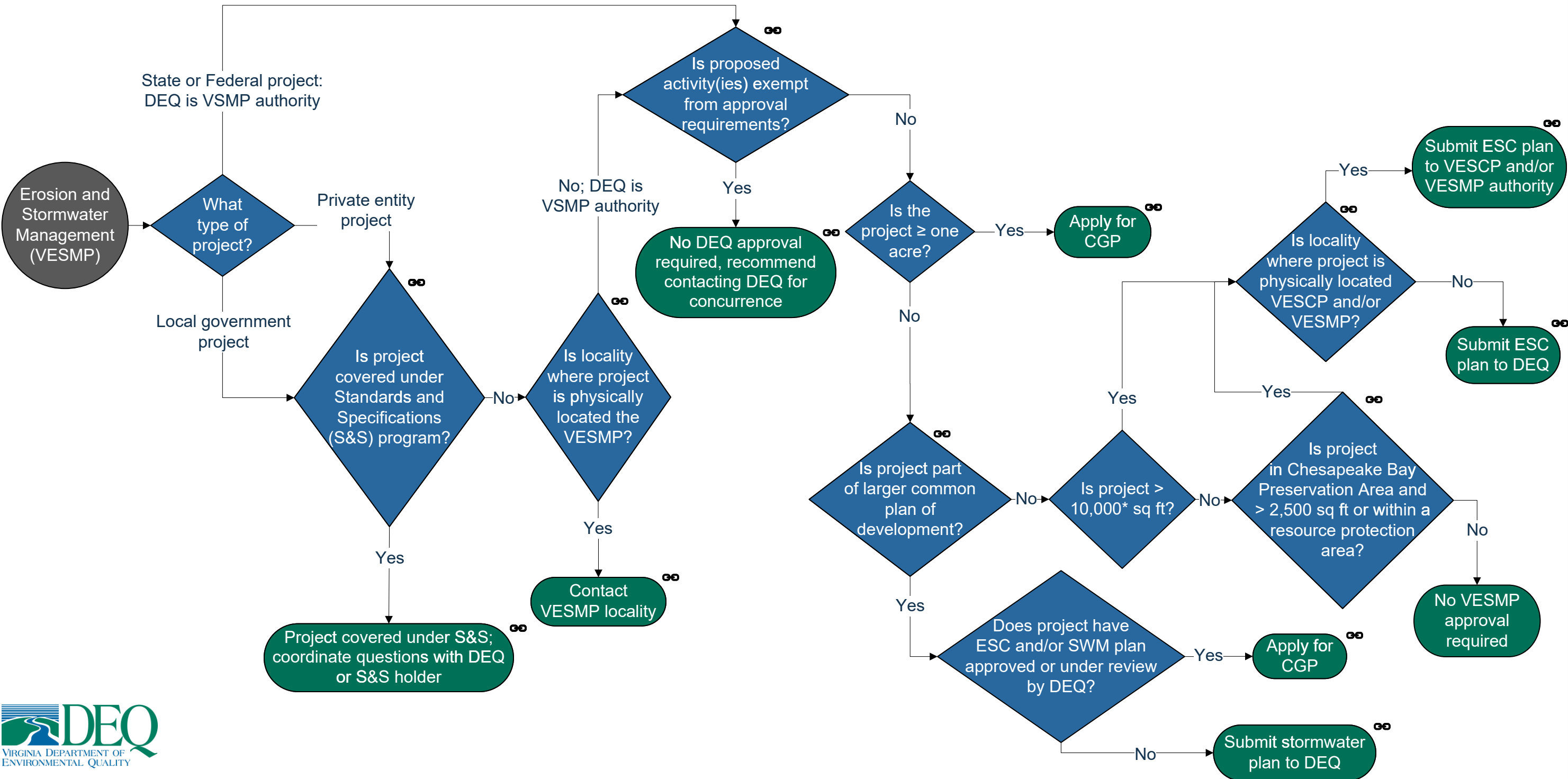
Permit Determination

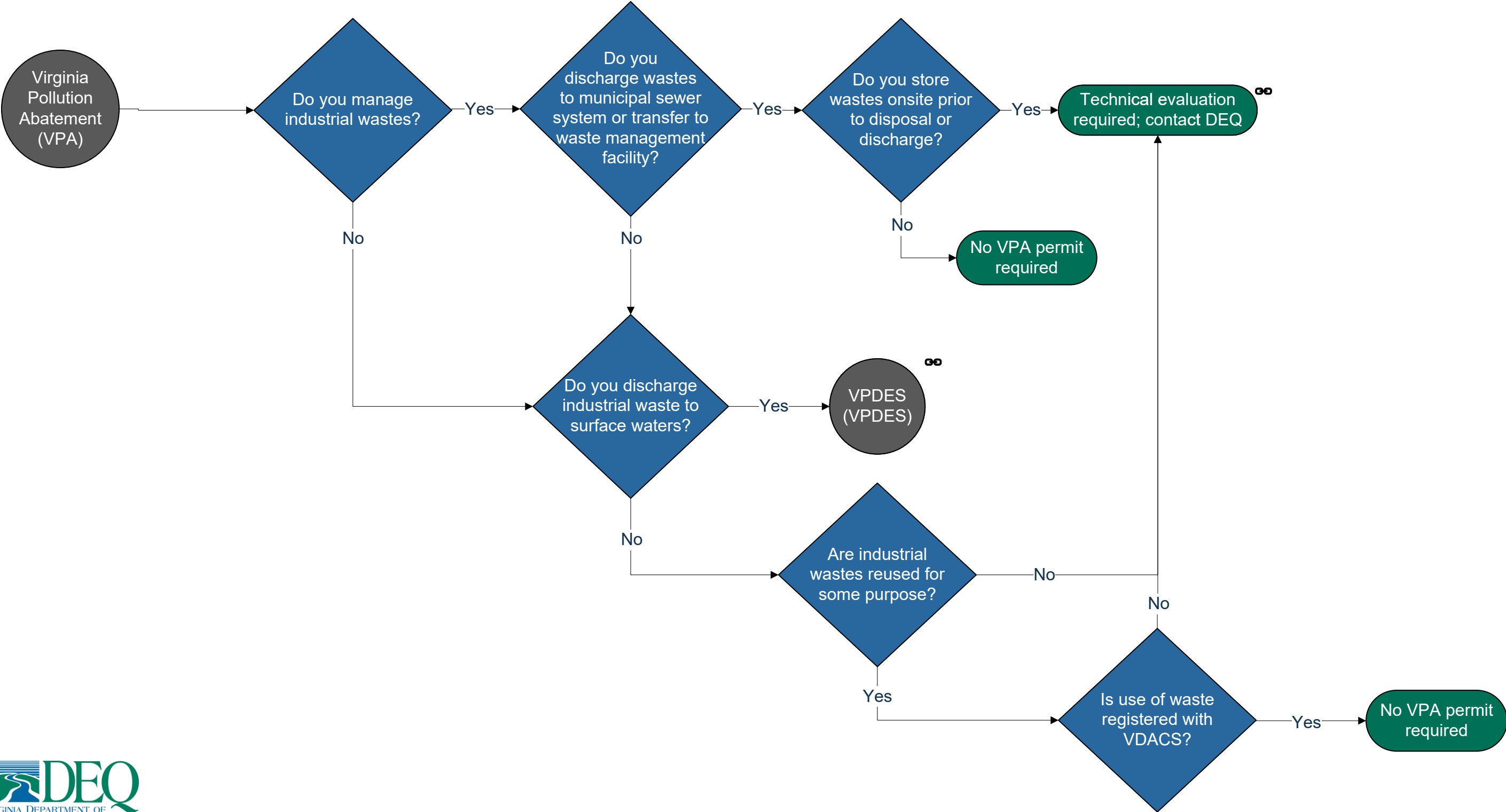


# Virginia Erosion and Stormwater Management Program

\*Some localities may have lower land disturbance thresholds such as 5,000 sf; contact Virginia Erosion & Sediment Control Program (VESCP) and/or Virginia Erosion & Stormwater Management Program (VESMP) to confirm land disturbance thresholds.

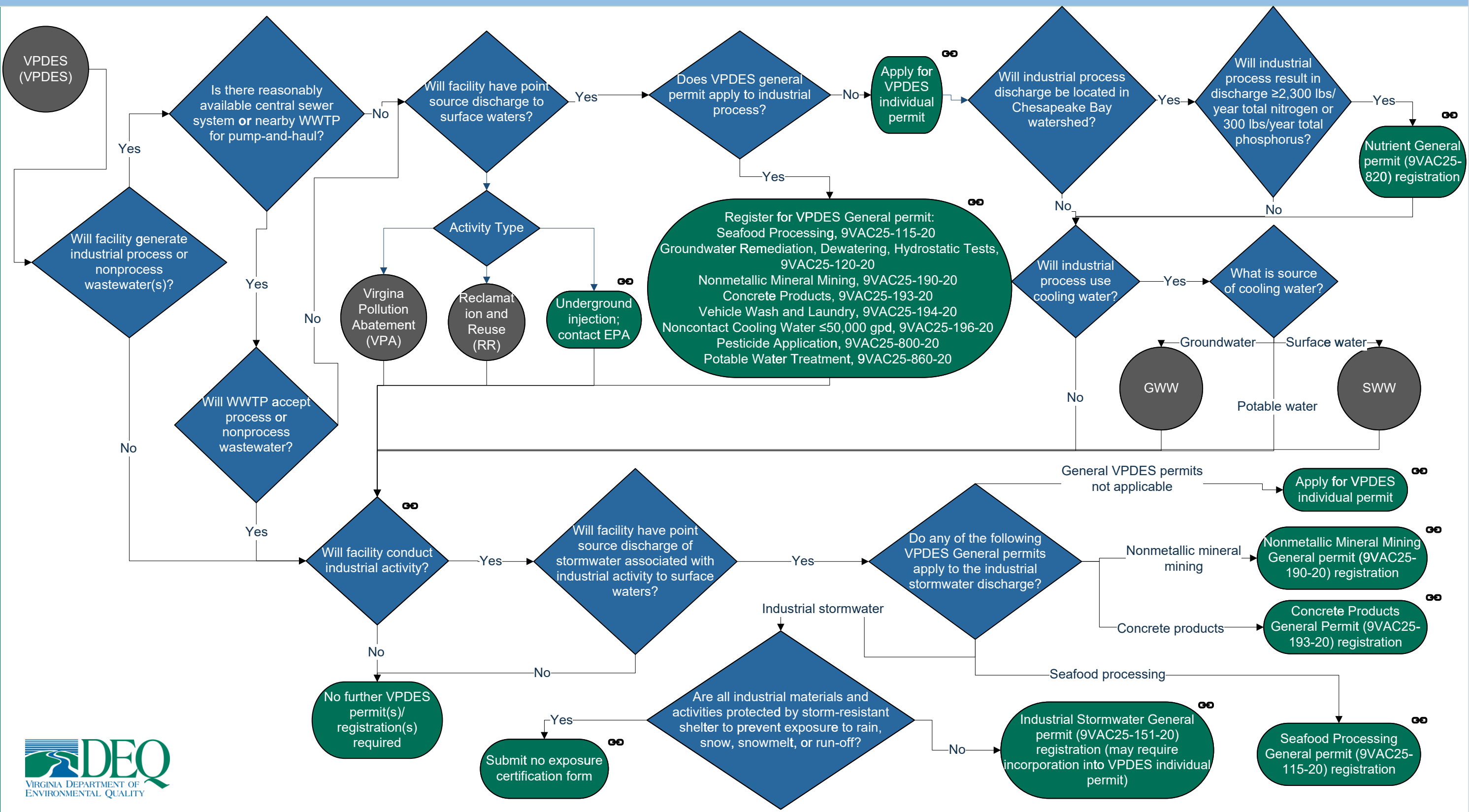
Plan / Permit Determination





# Virginia Pollutant Discharge Elimination System

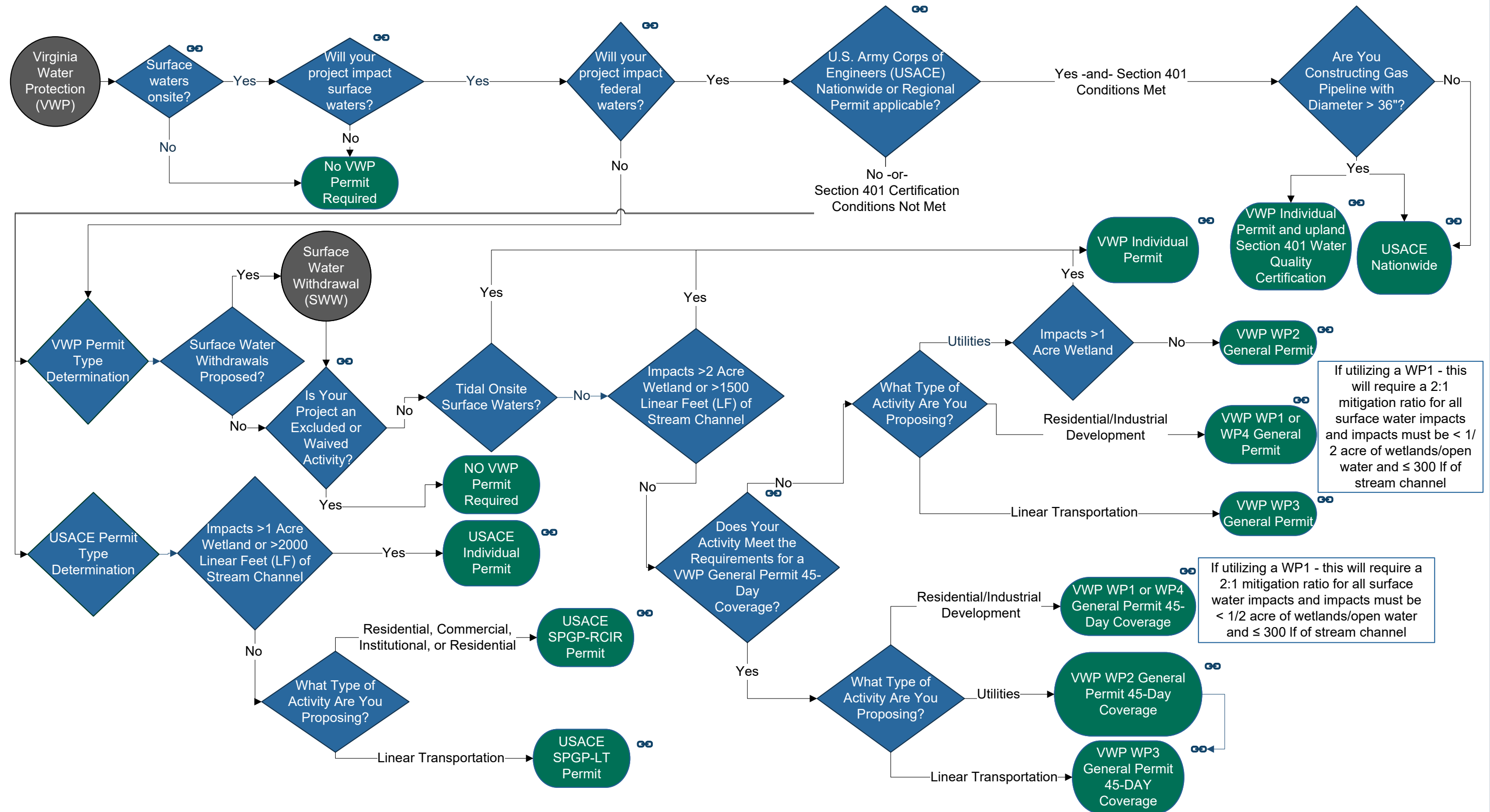
Permit Determination



## Permit Determination



## Virginia Water Protection



Glossary of Terms:

**Animal Feeding Operation (AFO)** - a lot or facility where animals are stabled or confined for a total of 45 days or more in any 12-month period, and where crops or vegetative growth is not maintained in the normal growing season over the lot or facility.

**Annual Standards and Specifications (AS&S)** - as an alternative to submitting soil erosion control and stormwater management plans for land-disturbing activities, entities may submit standards and specifications for its conduct of land-disturbing activities for Department of Environmental Quality approval.

**Chesapeake Bay Preservation Area** - areas designated at the locality level to implement the Chesapeake Bay Preservation Act, and specifically the establishment of specific management areas and resource buffers.

**Common Plan of Development** - a contiguous area where multiple, distinct construction activities occur under a single plan, potentially at different times and on different schedules.

**Concentrated Animal Feeding Operation (CAFO)** - an animal feeding operation in which discharges occur (when pollutants leave the site and reach surface waters), and the operation has been determined to be a significant contributor of pollution to surface waters.

**Designated Use** - the specific purposes for which a water body or segment of a water body is intended, as specified in water quality standards, such as public water supply, recreation, or aquatic life support.

**Disturbance Zone** - the area directly used for construction and operation of a solar energy project, and extends 100 feet beyond that boundary.

**Exemption Rate** - uncontrolled emissions below certain levels for criteria pollutants or toxic pollutants is exempt from needing a permit.

**Groundwater Management Area (GMA)** - set geographical areas in which groundwater withdrawal is subject to DEQ oversight.

**Hybrid Renewable Energy Project** - projects that include both an energy generation and energy storage component(s).

**Impairment** - an exceedance of one or more water quality standards precluding a waterbody or segment of a water body from meeting its designated use(s) due to the presence of one or more pollutants.

**Industrial Activity** - specific categories of facilities and activities, including manufacturing, mining, and waste treatment, whose stormwater discharges are regulated under VPDES permits.

**Point Source Discharge** - pollution that originates from a single, identifiable, and confined location, such as a pipe, ditch, or smokestack, from which pollutants are released.

**Pollutant of Concern** - any substance or condition that, when discharged from the MS4, has the potential to negatively impact water quality or the environment. In the context of Virginia, Pollutants of concerns include biochemical oxygen demand (BOD), sediment (or parameter that addresses sediment such as total suspended solids, turbidity, or siltation), pathogens, oil and grease, etc.

**Significant Contributor of Pollutants** - a specific designation relevant to CAFOs and under which VPDES permitting is required; and as dependent on certain defined factors contained in 9VAC25-31-130-B.

**Surface Water Determination** - a defined process by which an area is investigated for the presence of State jurisdictional surface waters - and through which the extent and resource type of those surface waters is defined.

**Uncontrolled Emission Rate** - the emission rate from a source when operating at maximum capacity without **air** pollution control equipment.

**Wasteload Allocations** - the portion of a receiving water's assimilative capacity that is allocated to one of its existing or future point sources of pollution.

**Water Quality Standards** - the desired condition of water bodies and the means to protect or achieve that condition, including designated uses, water quality criteria, and antidegradation requirements.

Acronyms:

**AC** - Alternating Current  
**AFO** - Animal Feeding Operation  
**AS&S** - Annual Standards and Specifications  
**AST** - Above Ground Storage Tank  
**AW** - Animal Waste  
**Bio** - Biosolids  
**CAFO** - Concentrated Animal Feeding Operation  
**CBPA** - Chesapeake Bay Preservation Area  
**CDD** - Construction and Demolition Debris  
**CERCLA** - Comprehensive Environmental Response, Compensation, and Liability Act  
**CGP** - Construction general Permit  
**ESC** - Erosion and Sediment Control  
**EU** - Emission Unit  
**GMA** - Groundwater Management Area  
**GW** - Groundwater Withdrawal  
**HAP** - Hazardous Air Pollutants  
**HW** - Hazardous Waste  
**kW** - Kilowatts  
**MACT** - Maximum Achievable Control Technology  
**MS4** - Municipal Separate Storm Sewer System  
**MW** - Megawatts  
**NESHAP** - National Emission Standards for Hazardous Pollutants  
**NSR** - New Source Review  
**RE** - Renewable Energy  
**RMW** - Regulated Medical Waste  
**RR** - Reclamation and Reuse (Water)  
**TMDL** - Total Maximum Daily Load  
**SCC** - State Corporation Commission  
**SW** - Solid Waste  
**SWM** - Stormwater Management  
**SWW** - Surface Water Withdrawal  
**USACE** - United States Army Corps of Engineers  
**USEPA** - United States Environmental Protection Agency  
**UST** - Underground Storage Tanks  
**VDACS** - Virginia Department of Agriculture and Consumer Services  
**VESCP** - Virginia Erosion and Sediment Control Program  
**VESMP** - Virginia Erosion and Stormwater Management Program  
**VMRC** - Virginia Marine Resources Commission  
**VPA** - Virginia Pollution Abatement  
**VPDES** - Virginia Pollutant Discharge Elimination System  
**VSMP** - Virginia Stormwater Management Plan  
**VWP** - Virginia Water Protection  
**WWTP** - Wastewater Treatment Plant

