





# Virginia Department of Environmental Quality and Environmental Justice

## Virginia Environmental Excellence Program (VEEP) Workshop

---

Danielle Simms

Office of Environmental Justice - Environmental Justice Program Manager

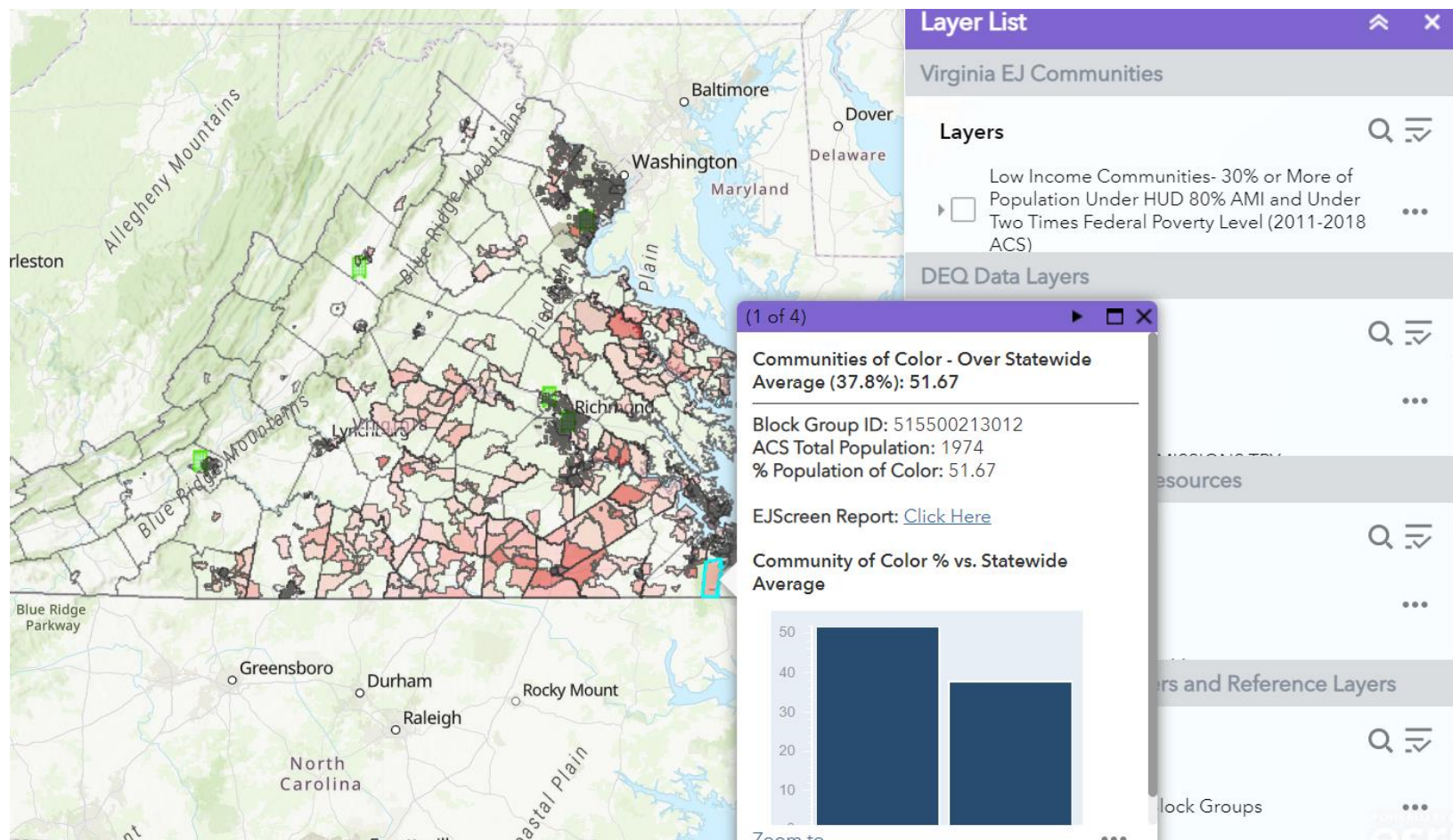
Thursday, May 25, 2023

# Presentation Overview

- Virginia EJScreen+
- Draft Permitting Guidance
- Grants Webinar
- Water Quality Monitoring and Air Quality Monitoring

# Virginia EJScreen+

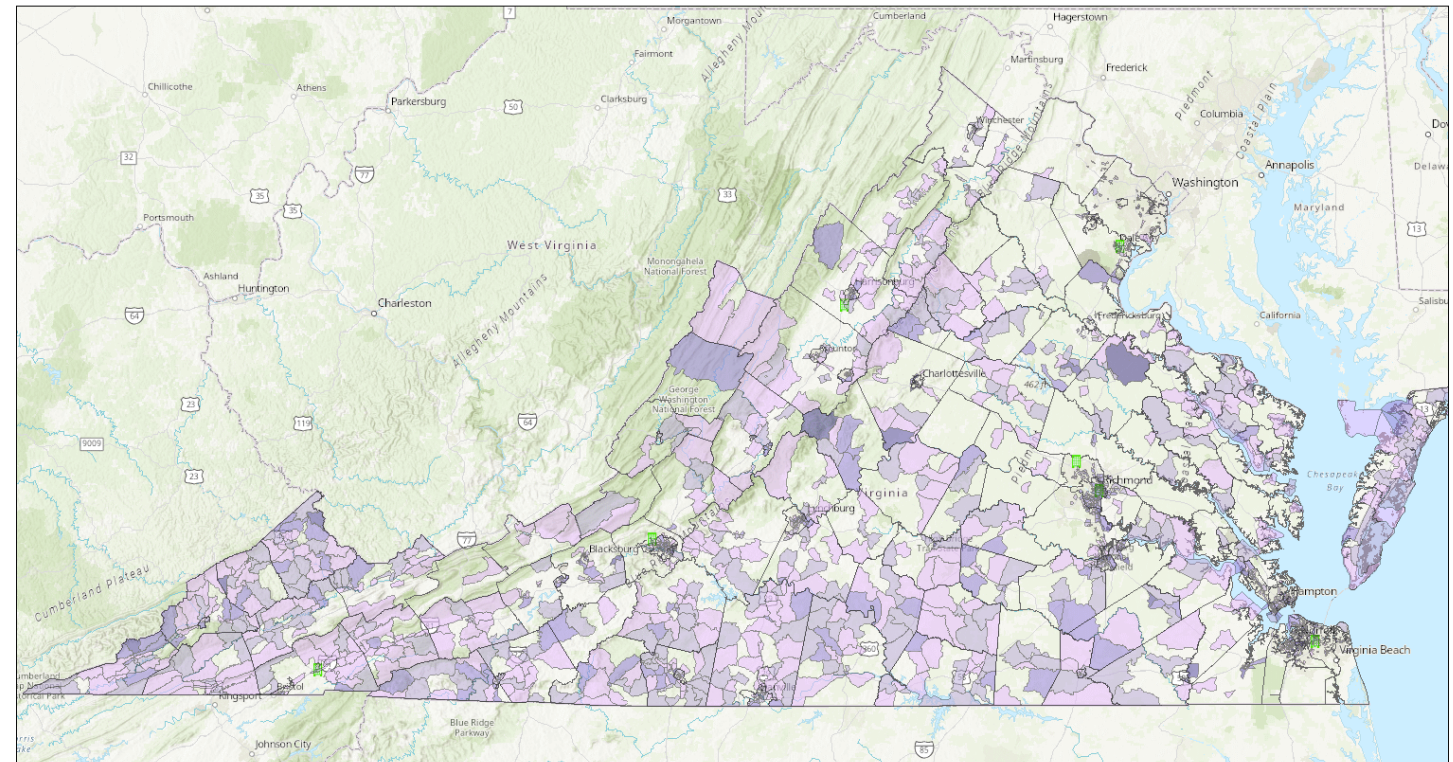
- [Virginia EJScreen+ Mapping Tool](#)
- Developed to increase access to and enhance awareness of Environmental Justice-related data and information throughout the Commonwealth.
- Two major EJ Indicators.



# Low Income Communities

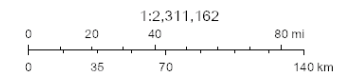
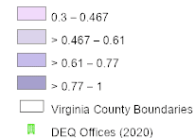
- Over 30% or more of the population in a census block group are under HUD 80% AMI and under two times federal poverty level.

VA EJScreen+ Low Income EJ Indicator



8/4/2022, 10:51:54 AM

Low Income Communities- 30% or More of Population Under HUD 80% AMI and Under Two Times Federal Poverty Level (2011-2018 ACS)



Virginia Department of Environmental Quality, VGIN, Esri, HERE, Garmin, FAO, NOAA, USGS, EPA, NPS, U.S. Environmental Protection Agency, Headquarters, Esri, USGS

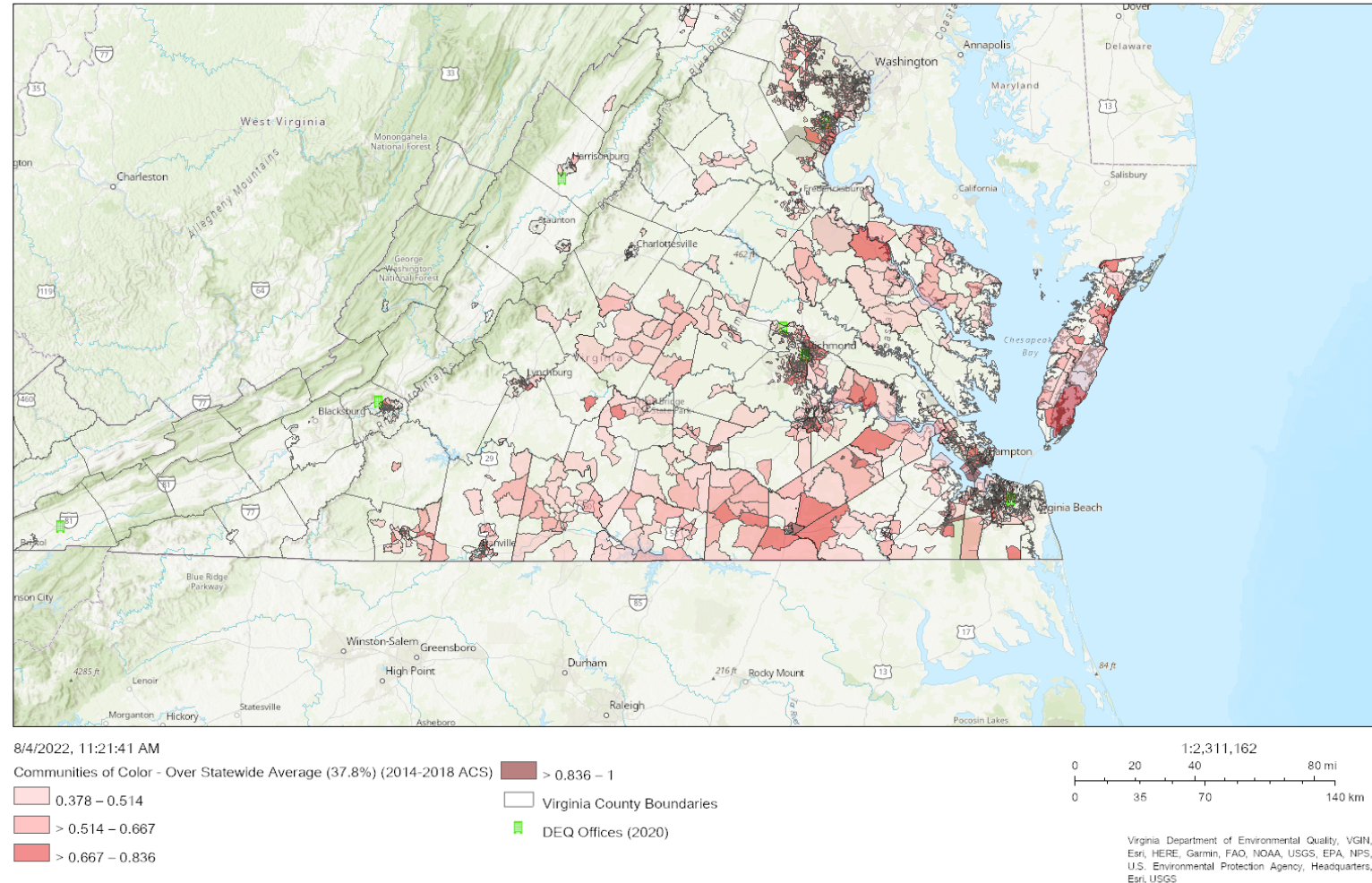
Department of Environmental Quality  
Esri, USGS | VGIN, Esri, HERE, Garmin, SafeGraph, FAO, METI/NASA, USGS, EPA, NPS | U.S. Environmental Protection Agency, Headquarters | Virginia Department of Environmental Quality | Oak Ridge National Laboratory (ORNL), National Geospatial-Intelligence Agency (NGA) Homeland Security Infrastructure



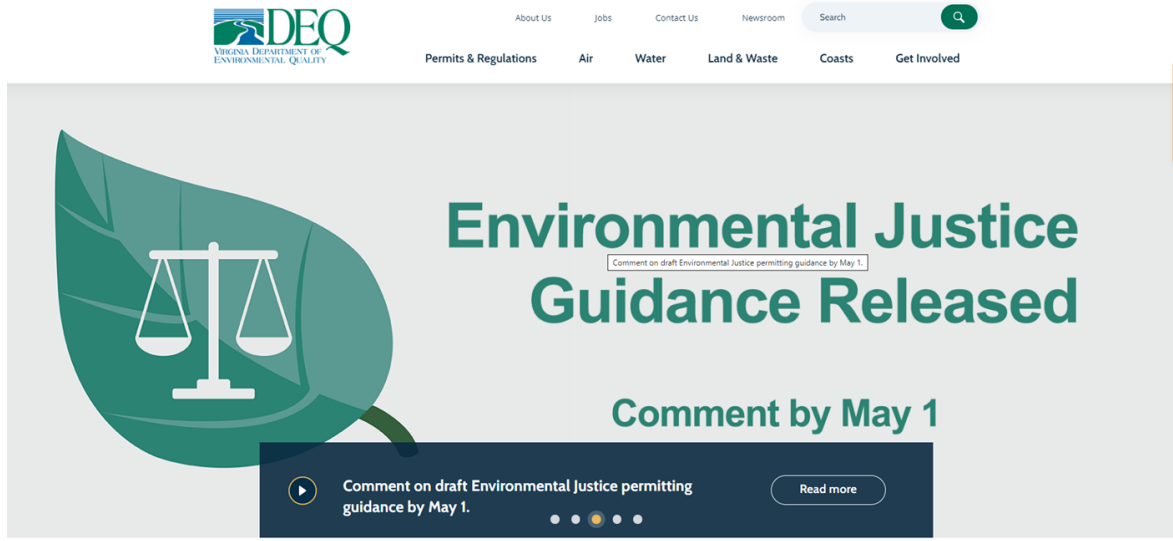
# Communities of Color

- A population made up of individuals who identify as belonging to one or more of the following groups: Black, African American, Asian, Pacific Islander, Native American, other non-white race, mixed race, Hispanic, Latino, or linguistically isolated over the statewide average of 37.8%

VA EJScreen+ Web Map Communities of Color EJ Indicator



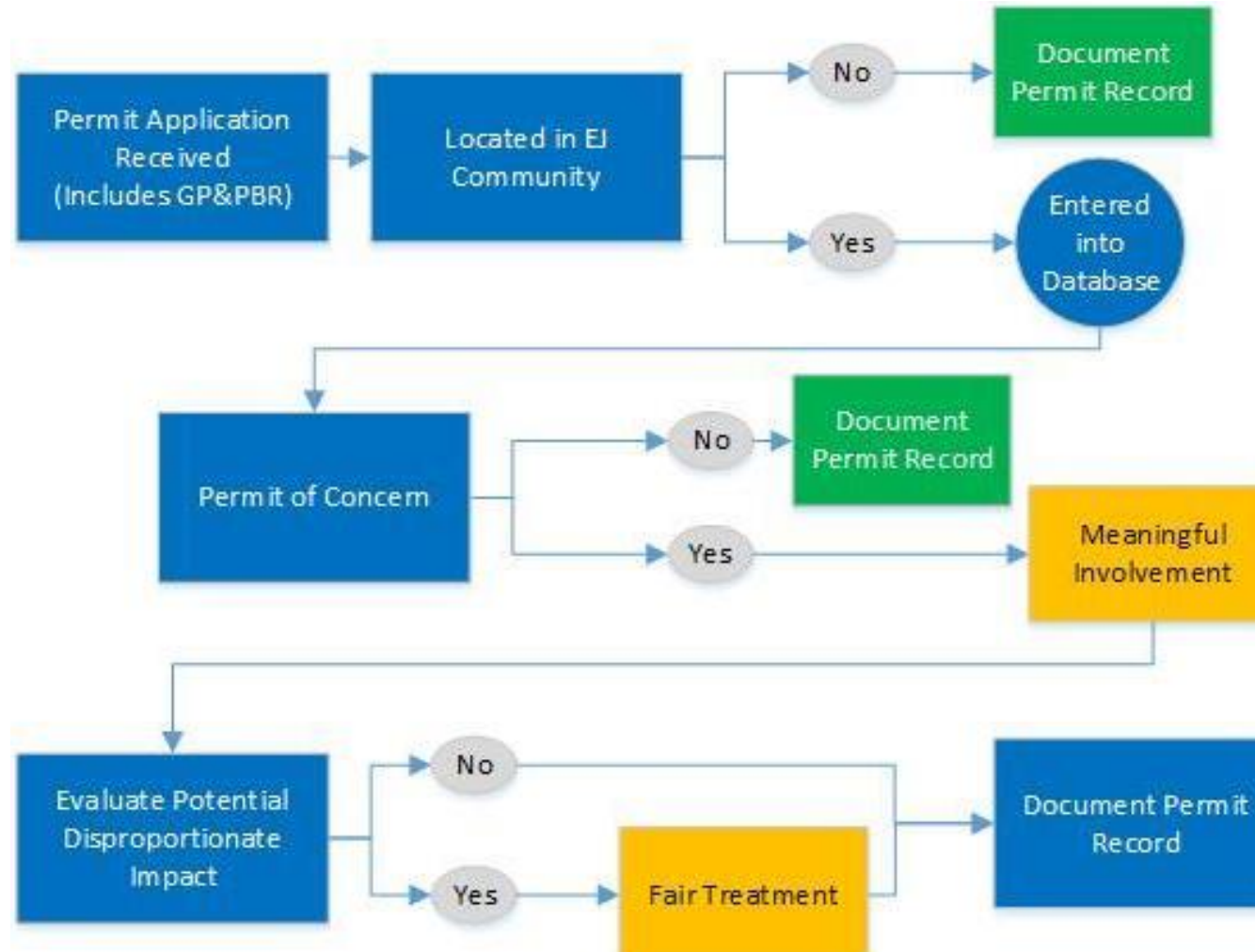
# Environmental Justice Draft Guidance: Overview



- Creates procedures to ensure fair treatment and meaningful involvement throughout DEQ's permitting processes
- Available for informal public comments until May 1, 2023
- Environmental Justice in the Permitting Process – Link to Draft Guidance

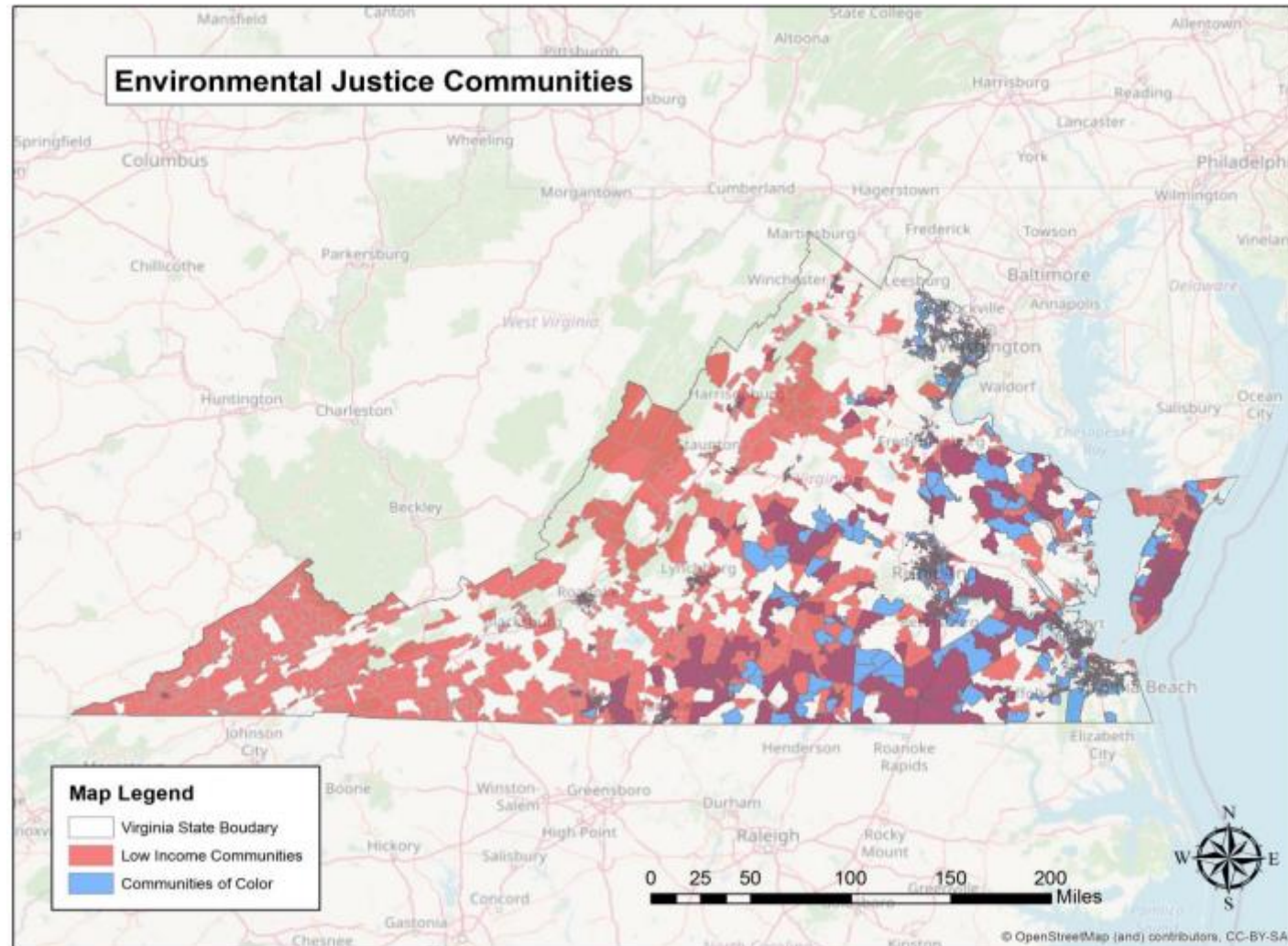
# Environmental Justice Draft Guidance

## Permit Evaluation Process – Flow chart





# Environmental Justice Draft Guidance: Map

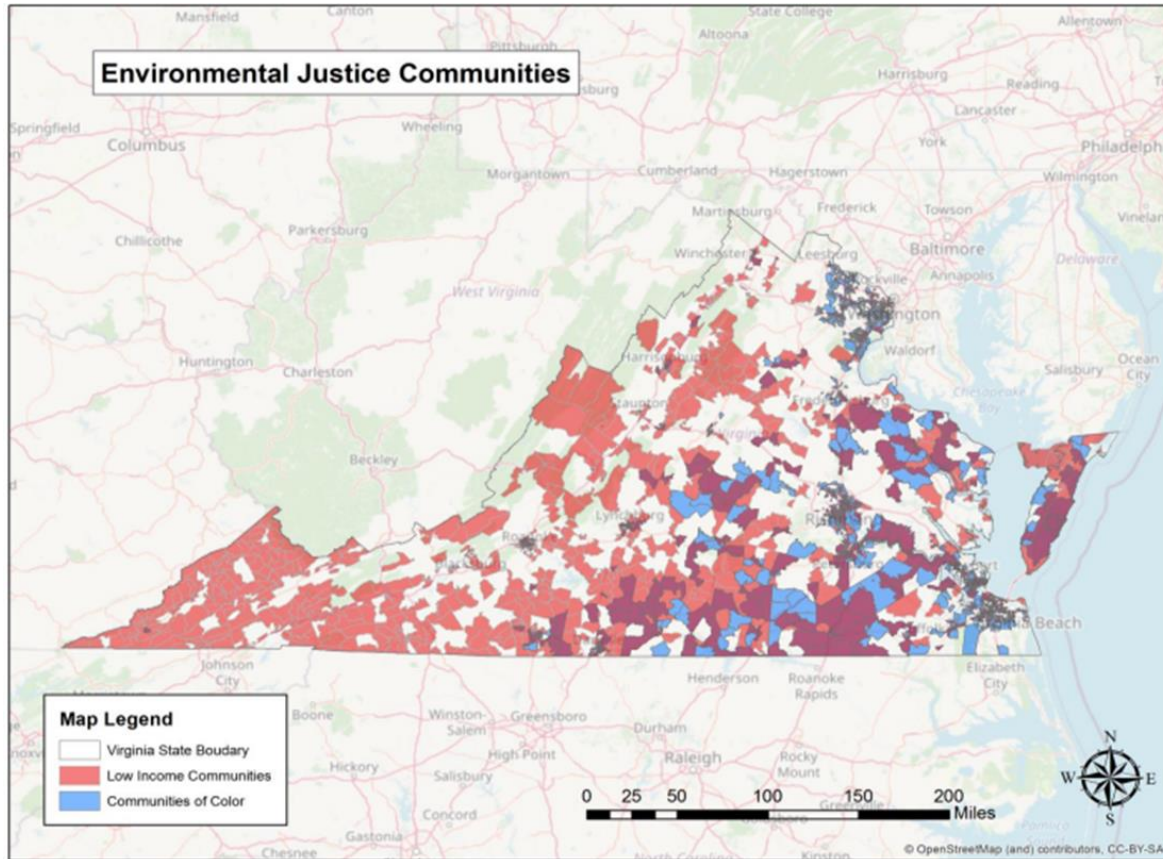


# Environmental Justice Draft Guidance: EJ Communities

## Low Income Communities

Census block groups in which 30 percent or more of the population is composed of people having an annual household income equal to or less than the greater of

- An amount equal to 80 percent of the median income of the area in which the household is located, as reported by the Department of Housing and Urban Development, and
- 200 percent of the Federal Poverty Level (2011-2018 ACS)

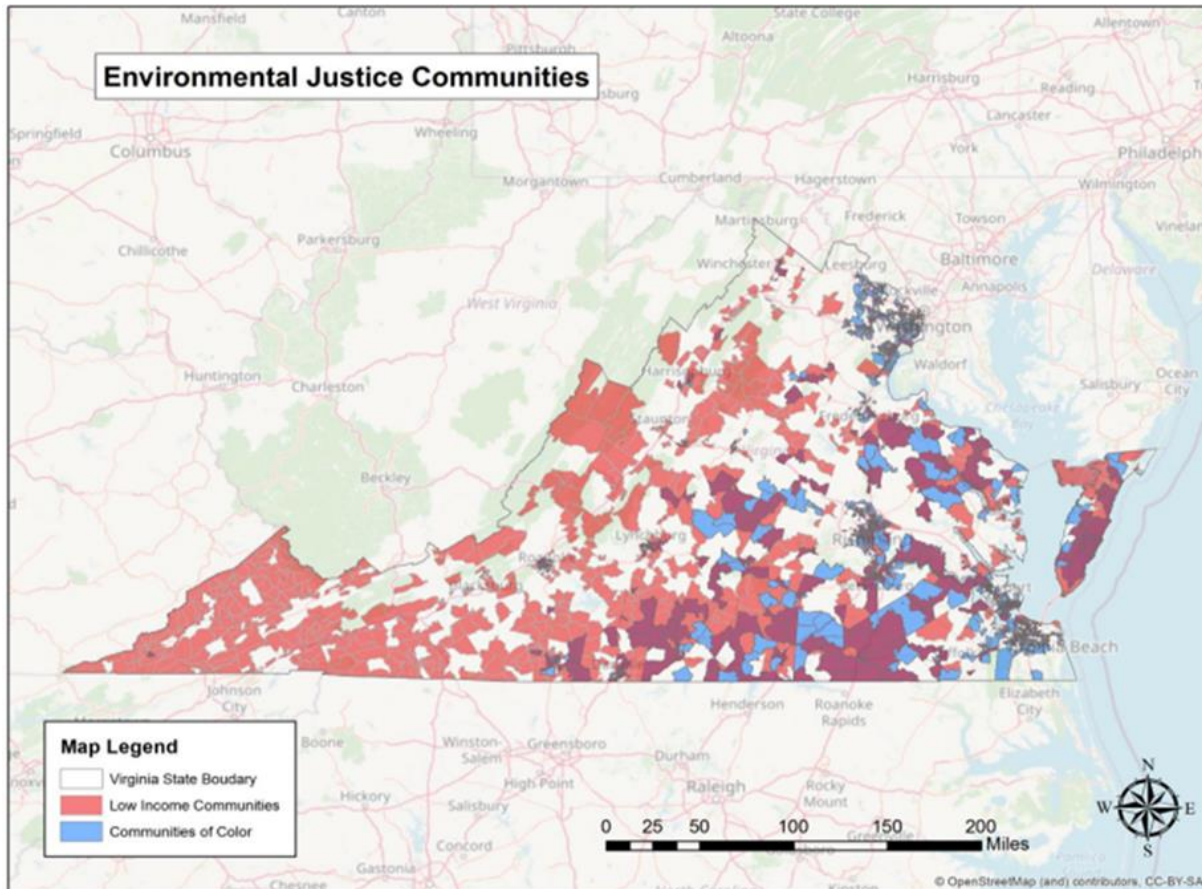




# Environmental Justice Draft Guidance: EJ Communities

## Communities of Color

Any geographically distinct area where the population of color, expressed as a percentage of the total population of such area, is higher than the population of color in the Commonwealth expressed as a percentage of the total population of the Commonwealth (37.8% 2014-2018 American Community Survey (ACS)).



# Environmental Justice Draft Guidance: Permits of Concern

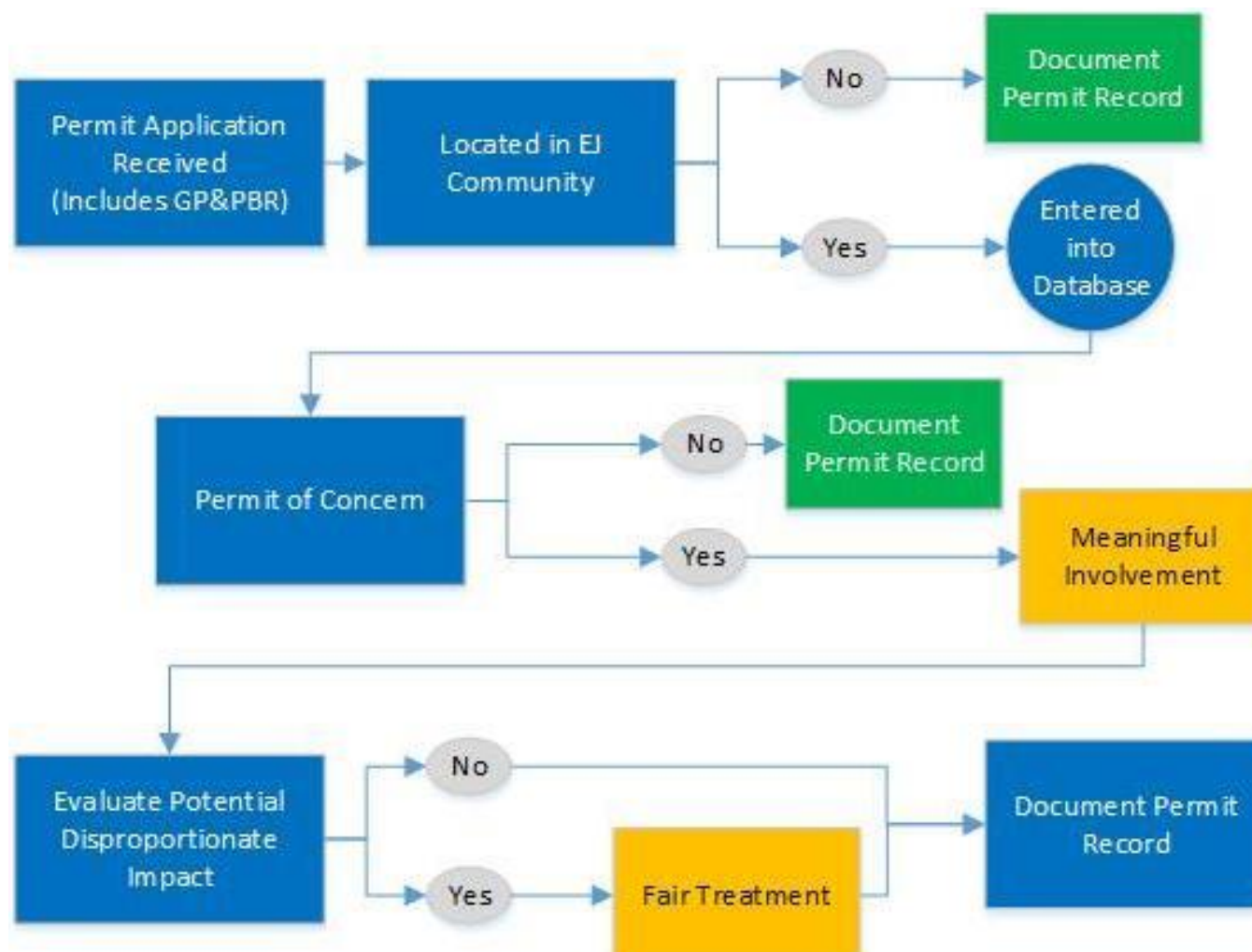
PERMITS of CONCERN
AIR <sup>1</sup>
Construction of a new major source or major modification to an existing major source
Construction of a new major source or major modification to an existing fossil fuel-fired generating facility with a capacity of 500 megawatts or more
Construction of a new major source or major modification to an existing fossil fuel-fired compressor station facility used to transport natural gas (this excludes fossil fueled backup compressor station power)
WATER
VPDES new or expanded major municipal ( $\geq 25$ MGD) and new or expanded major industrial discharges
VWP wetlands individual permits greater than 10ac wetlands or 25,000 lf stream proposed impacts
Groundwater new individual permits ( $\geq 1.0$ MGD) or expanded existing withdrawals
Surface Water Withdrawal new individual or expanded existing withdrawals
LAND
New or expanded solid waste landfills
New or modified hazardous waste permitted Treatment / Storage / Disposal Facilities
New or expanded materials recovery facility or transfer station covered by Permit by Rule
Other Permits on Case by Case Basis

<sup>1</sup> New stationary sources and projects at existing stationary sources that are exempt from permitting under 9VAC5 Chapter 80, operating permits and permit amendments are not considered permits of concern.



# Environmental Justice Draft Guidance

## Permit Evaluation Process – Flow chart



# Grants, Water Quality Monitoring, Air Quality Monitoring

- Grant webinar – March 2023
- Nominate water bodies for monitoring – March/April 2023
- Citizen Water Quality Monitoring
- Air Quality Monitoring – Tidewater Air Monitoring Evaluation Project

**Thank you!**

Any questions?