

Coastal Virginia Ecological Value Assessment

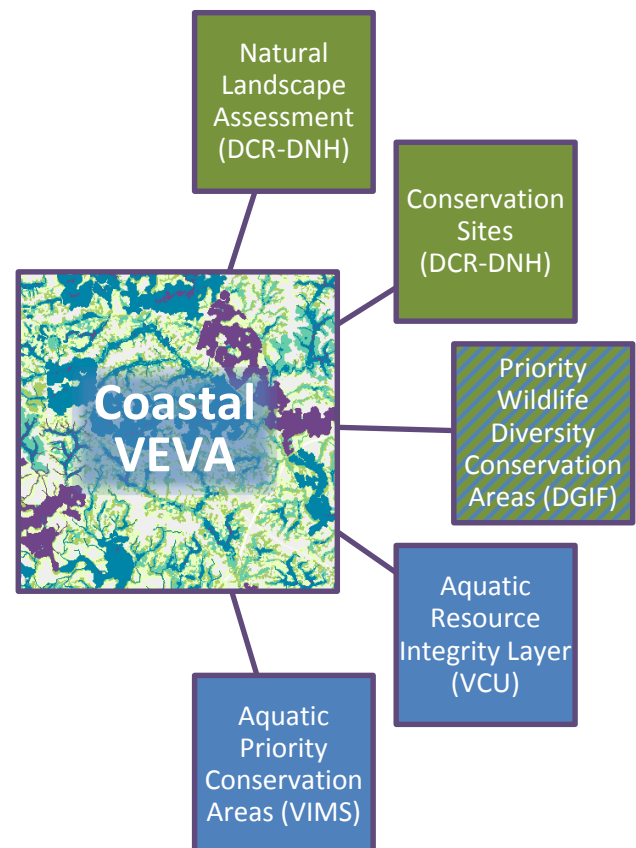
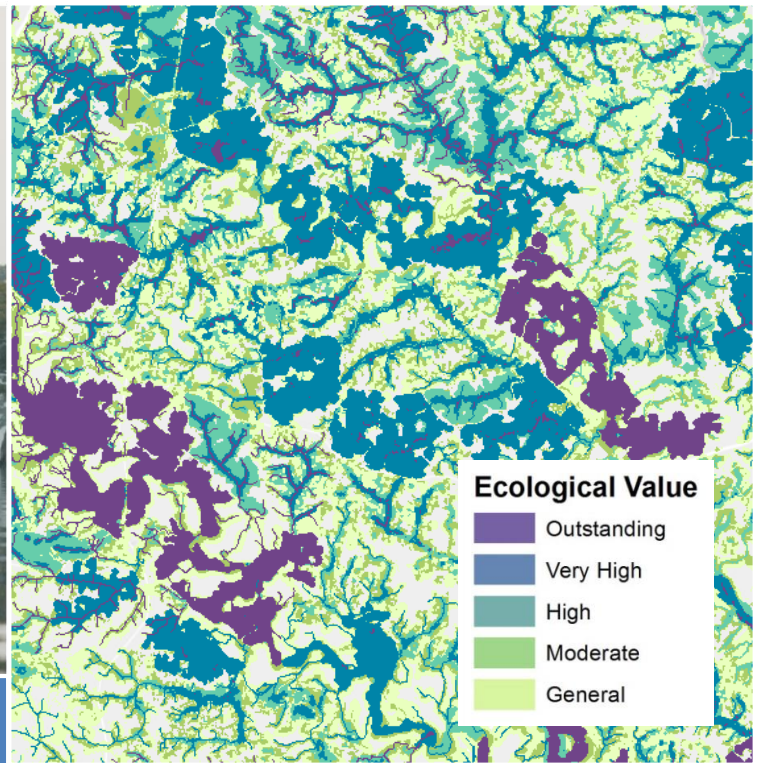
The Coastal Virginia Ecological Value Assessment (Coastal VEVA) is a collaborative integration of conservation datasets and priorities in Virginia's coastal zone.

Coastal VEVA was developed to provide guidance for land use management and conservation planning by synthesizing the best available natural resource information into a single geospatial product.

To create this integrated map depicting areas of ecological importance, the Virginia Coastal Zone Management Program (VA CZM) partnered with the Virginia Department of Conservation and Recreation Division of Natural Heritage (VA DCR-DNH), the Virginia Department of Game and Inland Fisheries (VA DGIF), VCU Center for Environmental Studies (VCU CES), and VIMS Center for Coastal Resources Management (VIMS CCRM).

Coastal VEVA combines scientific data and best professional judgment to rank terrestrial and aquatic areas for their ecological value. These values can be used to prioritize lands for preservation, develop strategies for special area management actions, or to build awareness about Virginia's natural communities.

Coastal VEVA and all partner component models were most recently updated in 2017.



See next page for more information on data, methodology, and contacts

This project was funded in part by the Virginia Coastal Zone Management Program at the Department of Environmental Quality through grant number NA14NOS4190141 and NA16NOS4190 of the U.S. Department of Commerce, National Oceanic and Atmospheric Administration, under the Coastal Zone Management Act of 1972, as amended.



Virginia Coastal Zone
MANAGEMENT PROGRAM



Coastal VEVA

was created by overlaying areas of ecological importance as defined and created by identified partner experts. Each partner provided models which assigned values of significance to areas based on expert opinion.

The final layer was created by overlaying all the models and picking out the highest value at each location (called a max value). The highest value was then used to create the final layer.

Partner Component Models and Input Data



VA DCR-DNH

- Conservation Sites
- Natural Landscape Assessment
- Natural Land Network – a network of the highest priority Ecological Cores and the corridors and nodes that connect them



VA DGIF

- Priority Wildlife Diversity Conservation Areas
- Important Bird Areas
- National Wetland Inventory
- Unique Terrestrial Areas
- Threatened and Endangered Species Waters
- NHD Streams
- Species Observations
- Potential Aquatic and Terrestrial Habitat
- Ecological Cores
- Colonial Water Birds
- Anadromous Fish Use Areas



VCU CES

- Aquatic Resource Integrity Layer
- Stream Reach Assessment
- Modified Index of Biotic Integrity Watershed Assessment
- Healthy Waters Watersheds



VIMS CCRM

- Aquatic Priority Conservation Areas
- Shellfish Vulnerability
- Reef Restoration Sites
- Oyster Density
- Artificial Fishing Reefs
- Submerged Aquatic Vegetation Coverage
- Seed Areas
- Aquaculture Sites
- Turtle Nests
- Regulated Areas

3	3	4
3	4	4
1	1	1

max

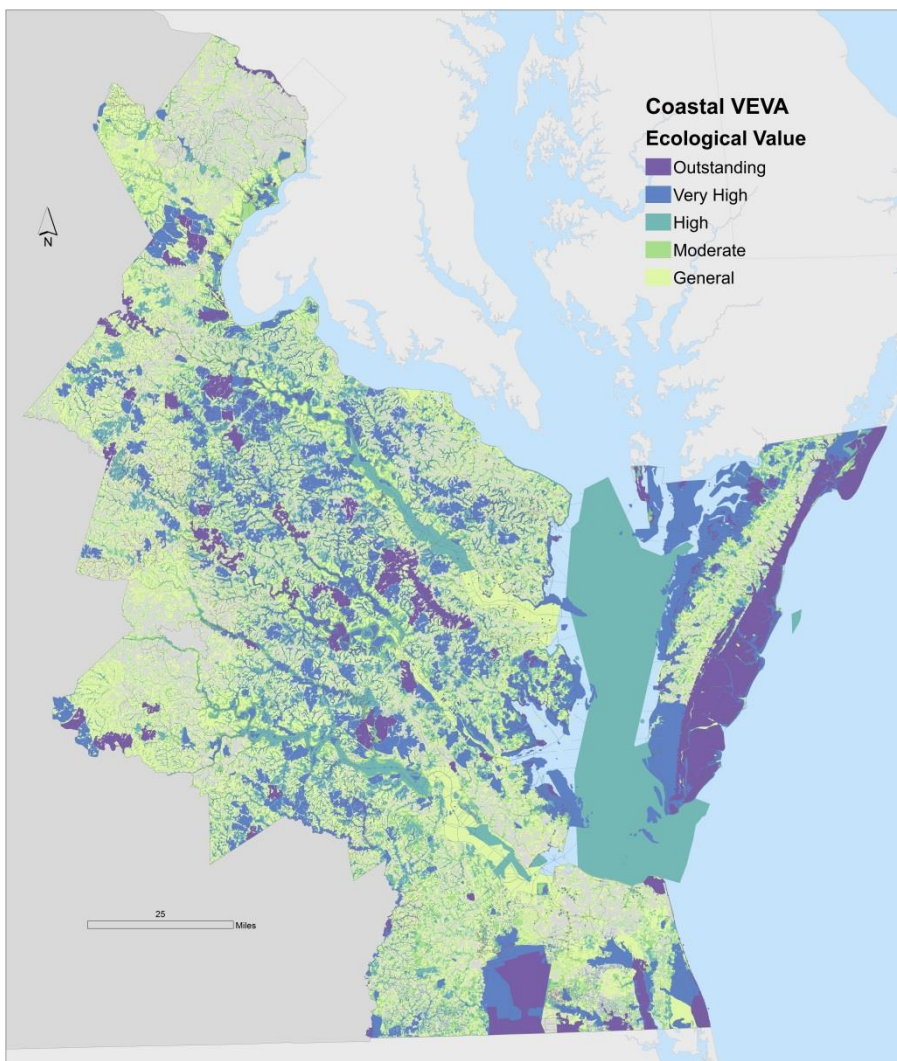
1	5	5
2	2	1
2	2	1

max

2	2	2
2	5	4
1	1	1

=

3	5	5
3	5	4
2	2	1



Coastal VEVA can be found under the Conservation Planning category on Virginia CZM's Coastal GEMS mapping application at www.coastalgems.org

For more information contact:

Coastal VEVA:

VA CZM Program, Nicholas Meade
nick.meade@deq.virginia.gov

Partner Component Models:

VA DCR-DNH, Joseph Weber
joseph.weber@dcr.virginia.gov
VA DGIF, Jay Kapalczyński
Jay.Kapalczyński@dgif.virginia.gov
VCU CES, Will Stuart
wshuart@vcu.edu
VIMS CCRM, Marcia Berman
marcia@vims.edu

Coastal VEVA is intended to guide conservation planning and efforts, and is not intended to replace on the ground surveys or consultation with biologists. This data serves as a compliment to existing local data.